

## PERFORMANCE

### Processor

Intel® Core™ i5-1235U, 10C (2P +8E) / 12T, P-core 1.3 / 4.4GHz, E-core 0.9 / 3.3GHz, 12MB

### Graphics

Integrated Intel Iris® Xe Graphics

### Chipset

Intel SoC Platform

### Memory

8GB Soldered DDR4-3200 + 8GB SO-DIMM DDR4-3200

### Memory Slots

One memory soldered to systemboard, one DDR4 SO-DIMM slot, dual-channel capable

### Max Memory

Up to 40GB (8GB soldered + 32GB SO-DIMM) DDR4-3200

### Storage

512GB SSD M.2 2242 PCIe® 4.0x4 NVMe®

### Storage Support

One drive offering, up to 1TB M.2 2242 SSD or 1TB M.2 2280 SSD

### Card Reader

4-in-1 Card Reader

### Optical

None

### Audio Chip

High Definition (HD) Audio, Realtek® ALC3287 codec

### Speakers

Stereo speakers, 2W x2, Dolby® Audio™

### Camera

FHD 1080p with Privacy Shutter

### Microphone

2x, Array

### Battery

Integrated 45Wh

### Max Battery Life

Model with 45Wh battery:  
MobileMark® 2018: up to 6 hr  
Local video (1080p) playback@150nits: up to 8 hr

### Power Adapter

65W USB-C® (3-pin)

## DESIGN

### Display

15.6" FHD (1920x1080) IPS 300nits Anti-glare, 45% NTSC

### Touchscreen

None

### Keyboard

Backlit, English

### Case Color

Mineral Grey

### Surface Treatment

Anodizing Sandblasting

### Case Material

Aluminium (Top), PC + ABS (Bottom)

### Dimensions (WxDxH)

357 x 235 x 18.9 mm (14.1 x 9.25 x 0.74 inches)

### Weight

Starting at 1.7 kg (3.75 lbs)

## SOFTWARE

### Operating System

Windows® 11 DG Windows 10 Pro 64, English

### Bundled Software

Office Trial

## CONNECTIVITY

### Ethernet

100/1000M

### WLAN + Bluetooth®

Wi-Fi® 6E 11ax, 2x2 + BT5.2

### Standard Ports

- 1x USB 3.2 Gen 1
- 1x USB 3.2 Gen 1 (Always On)
- 1x USB-C 3.2 Gen 2 (support data transfer, Power Delivery 3.0, and DisplayPort™ 1.4)
- 1x Thunderbolt™ 4 / USB 4 40Gbps (support data transfer, Power Delivery 3.0, and DisplayPort 1.4)
- 1x HDMI®, up to 4K/60Hz
- 1x Card reader
- 1x Ethernet (RJ-45)
- 1x Headphone / microphone combo jack (3.5mm)

### Docking

Various docking solutions supported via Thunderbolt or USB-C.

For more compatible docking solutions, please visit [Docking for ThinkBook 15 G4 IAP](#)

## SECURITY & PRIVACY

### Security Chip

Firmware TPM 2.0

### Fingerprint Reader

Touch Style

### Physical Locks

Kensington® Nano Security Slot, 2.5 x 6 mm

### Other Security

Camera privacy shutter

## MANAGEABILITY

### System Management

Non-vPro

## SERVICE

### Base Warranty

1-year, Depot

### Included Upgrade

1Y Onsite upgrade from 1Y Courier/Carry-in (5WSOA23748)

## ACCESSORIES

### Bundled Accessories

None

## CERTIFICATIONS

### Green Certifications

- EPEAT™ Gold
- ENERGY STAR® 8.0
- ErP Lot 3
- RoHS compliant

### Other Certifications

TÜV Rheinland® Low Blue Light (Software Solution)

### Mil-Spec Test

MIL-STD-810H military test passed

## MODEL

**TopSeller** : Yes

**Announce Date** : 2022-06-14

**EAN / UPC / JAN** : 196800632517

**End of Support** : 2028-10-28

· Lenovo reserves the right to change specifications or other product information without notice.

· Product image on this page is a sample, it may not match the real color of this model

· Battery life is an estimated maximum. Actual battery life may vary based on many factors, including screen brightness, active applications, features, power management settings, battery age and conditioning, and other customer preferences

## Premier Support - A direct 24x7x365 line to our most elite technicians.



Advanced technical support, 24x7x365, in more than 100 markets



Technical Account Managers for proactive relationship and escalation management



Comprehensive hardware & OEM software support



Priority on service delivery and repair parts



Single point of contact for simplified end-to-end case management



Lenovo Service Connect Portal for customized reporting and product support

## Accidental Damage Protection - Protection of your PC from the unexpected.

Experience shows that a significant portion of devices may be damaged (and not covered under warranty) in the first three years. Lenovo's Accidental Damage Protection service covers accidents beyond the system warranty such as drops, spills, bumps and even electrical surges. Make sure your new device has maximum protection, avoid unplanned costs and get peace of mind.

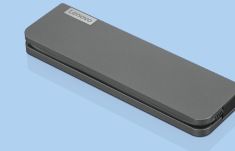
## Base Warranty - Included with the systems you purchase, default 1- or 3-year coverage window.

## Warranty Extensions & Upgrades - Service and protection that's right for your circumstances.

- Pick Up & Return Courier
- Onsite Support
- Technician Installed Customer
- Replaceable Unit Service
- International Warranty Upgrade

Lenovo may not offer the products, services or features discussed in this document in all regions. Lenovo may withdraw an offering at any time. Information is subject to change without notice. Consult your local representative for information on offerings available in your area. Lenovo reserves the right to change specifications or other product information without notice. Lenovo is not responsible for photographic or typographical errors. Lenovo provides this publication "as is" without warranty of any kind, either express or implied, including the implied warranties of merchantability or fitness for a particular purpose.

## Recommended Accessories



### Lenovo USB-C Mini Dock\_US

40AU0065US

Expand Your Potential with An Universal Mini Dock; Lenovo understands that modern business depends on a wide variety of PC's and even brands to meet their business needs. To make this easier Lenovo USB-C Mini dock is ...

## Recommended Services

BEST	5Y Premier Support Upgrade from 1Y Onsite (5WS0T36174)
BETTER	4Y Premier Support Upgrade from 1Y Onsite (5WS0T36131)
GOOD	3Y Premier Support Upgrade from 1Y Onsite (5WS0T36120)

For a full list of accessories and services, please visit:  
<https://smartfind.Lenovo.com>



**PSREF**  
Product Specifications  
Reference