

PERFORMANCE

Processor

Intel® Core™ i7-1255U, 10C (2P +8E) / 12T, P-core 1.7 / 4.7GHz, E-core 1.2 / 3.5GHz, 12MB

Graphics

NVIDIA® GeForce MX550 2GB GDDR6

Chipset

Intel SoC Platform

Memory

8GB Soldered DDR4-3200 + 8GB SO-DIMM DDR4-3200

Memory Slots

One memory soldered to systemboard, one DDR4 SO-DIMM slot, dual-channel capable

Max Memory

Up to 40GB (8GB soldered + 32GB SO-DIMM) DDR4-3200

Storage

512GB SSD M.2 2242 PCIe® 4.0x4 NVMe®

Storage Support

One drive offering, up to 1TB M.2 2242 SSD or 1TB M.2 2280 SSD

Card Reader

4-in-1 Card Reader

Optical

None

Audio Chip

High Definition (HD) Audio, Realtek® ALC3287 codec

Speakers

Stereo speakers, 2W x2, Dolby® Audio™

Camera

FHD 1080p with Privacy Shutter

Microphone

2x, Array

Battery

Integrated 45Wh

Max Battery Life

Model with 45Wh battery:
MobileMark® 2018: up to 6 hr
Local video (1080p) playback@150nits: up to 8 hr

Power Adapter

65W USB-C® (3-pin)

DESIGN

Display

14" FHD (1920x1080) IPS 300nits Anti-glare, 45% NTSC

Touchscreen

None

Keyboard

Backlit, English

Case Color

Mineral Grey

Surface Treatment

Anodizing Sandblasting

Case Material

Aluminium (Top), Aluminium (Bottom)

Dimensions (WxDxH)

323 x 218 x 17.9 mm (12.72 x 8.58 x 0.7 inches)

Weight

Starting at 1.4 kg (3.09 lbs)

SOFTWARE

Operating System

Windows® 11 DG Windows 10 Pro 64, English

Bundled Software

Office Trial

CONNECTIVITY

Ethernet

100/1000M

WLAN + Bluetooth®

Wi-Fi® 6E 11ax, 2x2 + BT5.2

Standard Ports

- 1x USB 3.2 Gen 1
- 1x USB 3.2 Gen 1 (Always On)
- 1x USB-C 3.2 Gen 2 (support data transfer, Power Delivery 3.0, and DisplayPort™ 1.4)
- 1x Thunderbolt™ 4 / USB 4 40Gbps (support data transfer, Power Delivery 3.0, and DisplayPort 1.4)
- 1x HDMI®, up to 4K/60Hz
- 1x Card reader
- 1x Ethernet (RJ-45)
- 1x Headphone / microphone combo jack (3.5mm)

Docking

Various docking solutions supported via Thunderbolt or USB-C.

For more compatible docking solutions, please visit [Docking for ThinkBook 14 G4 IAP](#)

SECURITY & PRIVACY

Security Chip

Firmware TPM 2.0

Fingerprint Reader

Touch Style

Physical Locks

Kensington® Nano Security Slot, 2.5 x 6 mm

Other Security

Camera privacy shutter

MANAGEABILITY

System Management

Non-vPro

SERVICE

Base Warranty

1-year, Depot

Included Upgrade

1Y Onsite upgrade from 1Y Courier/Carry-in (5WSOA23748)

ACCESSORIES

Bundled Accessories

None

CERTIFICATIONS

Green Certifications

- EPEAT™ Gold
- ENERGY STAR® 8.0
- ErP Lot 6
- RoHS compliant

Other Certifications

TÜV Rheinland® Low Blue Light (Software Solution)

Mil-Spec Test

MIL-STD-810H military test passed

MODEL

TopSeller	: Yes	Announce Date	: 2022-06-14
EAN / UPC / JAN	: 196800632531	End of Support	: 2028-10-28

Premier Support - A direct 24x7x365 line to our most elite technicians.



Advanced technical support, 24x7x365, in more than 100 markets



Technical Account Managers for proactive relationship and escalation management



Comprehensive hardware & OEM software support



Priority on service delivery and repair parts



Single point of contact for simplified end-to-end case management



Lenovo Service Connect Portal for customized reporting and product support

Accidental Damage Protection - Protection of your PC from the unexpected.

Experience shows that a significant portion of devices may be damaged (and not covered under warranty) in the first three years. Lenovo's Accidental Damage Protection service covers accidents beyond the system warranty such as drops, spills, bumps and even electrical surges. Make sure your new device has maximum protection, avoid unplanned costs and get peace of mind.

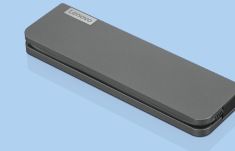
Base Warranty - Included with the systems you purchase, default 1- or 3-year coverage window.

Warranty Extensions & Upgrades - Service and protection that's right for your circumstances.

- Pick Up & Return Courier
- Onsite Support
- Technician Installed Customer
- Replaceable Unit Service
- International Warranty Upgrade

Lenovo may not offer the products, services or features discussed in this document in all regions. Lenovo may withdraw an offering at any time. Information is subject to change without notice. Consult your local representative for information on offerings available in your area. Lenovo reserves the right to change specifications or other product information without notice. Lenovo is not responsible for photographic or typographical errors. Lenovo provides this publication "as is" without warranty of any kind, either express or implied, including the implied warranties of merchantability or fitness for a particular purpose.

Recommended Accessories



Lenovo USB-C Mini Dock_US

40AU0065US

Expand Your Potential with An Universal Mini Dock; Lenovo understands that modern business depends on a wide variety of PC's and even brands to meet their business needs. To make this easier Lenovo USB-C Mini dock is ...

Recommended Services

BEST	5Y Premier Support Upgrade from 1Y Onsite (5WS0T36174)
BETTER	4Y Premier Support Upgrade from 1Y Onsite (5WS0T36131)
GOOD	3Y Premier Support Upgrade from 1Y Onsite (5WS0T36120)

For a full list of accessories and services, please visit:
<https://smartfind.Lenovo.com>



PSREF
Product Specifications
Reference