

SAMSUNG

SM-W720

SM-W727Y

SM-W723

SM-W728

SM-W727

SM-W728Y

User Manual

Table of Contents

Basics

- 3 Read me first
- 4 Device overheating situations and solutions
- 7 Package contents
- 8 Device layout
- 12 Battery
- 15 SIM or USIM card (mobile network-enabled models)
- 17 Memory card (microSD card)
- 20 Turning the device on and off
- 21 Keyboard Cover
- 28 Controlling the touchscreen
- 31 Windows
- 39 Entering text
- 41 Screen capture
- 41 Device and data management
- 42 InstantGo (Modern standby)
- 42 Connecting to an external display

Applications

- 43 Installing or uninstalling apps
- 44 Air Command
- 47 Samsung Notes
- 51 Samsung Flow
- 53 Show Window
- 55 Camera
- 56 Book Settings
- 56 Samsung Recovery

Settings

- 60 Windows Settings
- 62 BIOS (Setup utility)


Appendix

- 66 Troubleshooting
- 71 Windows recovery function
- 71 Removing the battery

Basics

Read me first

Please read this manual before using the device to ensure safe and proper use.

- Descriptions are based on the device's default settings.
- Some content may differ from your device depending on the region, service provider, model specifications, or device's software.
- Content (high quality content) that requires high CPU and RAM usage will affect the overall performance of the device. Apps related to the content may not work properly depending on the device's specifications and the environment that it is used in.
- Samsung is not liable for performance issues caused by apps supplied by providers other than Samsung.
- Samsung is not liable for performance issues or incompatibilities caused by edited registry settings or modified operating system software. Attempting to customise the operating system may cause the device or apps to work improperly.
- Software, sound sources, wallpapers, images, and other media provided with this device are licensed for limited use. Extracting and using these materials for commercial or other purposes is an infringement of copyright laws. Users are entirely responsible for illegal use of media.
- You may incur additional charges for data services, such as uploading and downloading, auto-syncing, or using location services depending on your data plan. For large data transfers, it is recommended to use the Wi-Fi feature.
- Default apps that come with the device are subject to updates and may no longer be supported without prior notice. If you have questions about an app provided with the device, contact a Samsung Service Centre. For user-installed apps, contact service providers.
- Modifying the device's operating system or installing softwares from unofficial sources may result in device malfunctions and data corruption or loss. These actions are violations of your Samsung licence agreement and will void your warranty.
- Depending on the region, you can view the regulatory information on the device. To view the information, tap  → **Book Settings** → **Legal information** → **Regulatory information**.

Instructional icons



Warning: situations that could cause injury to yourself or others



Caution: situations that could cause damage to your device or other equipment



Notice: notes, usage tips, or additional information

Device overheating situations and solutions

When the device heats up while charging the battery

While charging, the device and the charger may become hot. During wireless charging or fast charging, the device may feel hotter to the touch. This does not affect the device's lifespan and is in the device's normal range of operation. If the battery becomes too hot, the charger may stop charging.

Do the following when the device heats up:

- Disconnect the charger from the device and close any running apps. Wait for the device to cool down and then begin charging the device again.
- If the lower part of the device overheats, it could be because the connected USB cable is damaged. Replace the damaged USB cable with a new Samsung-approved one.
- When using a wireless charger, do not place foreign materials, such as metal objects, magnets, and magnetic stripe cards, between the device and the wireless charger.



The wireless charging or fast charging feature is only available on supported models.

When the device heats up during use

When you use features or apps that require more power or use them for extended periods, your device may temporarily heat up due to increased battery consumption. Close any running apps and do not use the device for a while.

The following are examples of situations in which the device may overheat. Depending on the functions and apps you use, these examples may not apply to your model.

- During the initial setup after purchase or when restoring data
- When downloading large files
- When using apps that require more power or using apps for extended periods
 - When playing high-quality games for extended periods
 - When recording videos for extended periods
 - When streaming videos while using the maximum brightness setting
 - When connecting to a TV
- While multitasking (or, when running many apps in the background)
 - When using Multi window
 - When updating or installing apps while recording videos
 - When downloading large files during a video call
 - When recording videos while using a navigation app
- When using large amount of data for syncing with the cloud, email, or other accounts
- When using a navigation app in a car while the device is placed in direct sunlight
- When using the mobile hotspot and tethering feature
- When using the device in areas with weak signals or no reception
- When charging the battery with a damaged USB cable
- When the device's multipurpose jack is damaged or exposed to foreign materials, such as liquid, dust, metal powder, and pencil lead
- When you are roaming

Do the following when the device heats up:

- Keep the device updated with the latest software.
- Conflicts between running apps may cause the device to heat up. Restart the device.
- Deactivate the Wi-Fi, GPS, and Bluetooth features when not using them.
- Close apps that increase battery consumption or that run in the background when not in use.
- Delete unnecessary files or unused apps.
- Decrease the screen brightness.
- If the device overheats or feels hot for a prolonged period, do not use it for a while. If the device continues to overheat, contact a Samsung Service Centre.

Device limitations when the device overheats

When the device heats up, the features and performance may be limited or the device may turn off to cool down. This feature is only available on supported models.

- To lower the device's temperature, the screen brightness and the performance speed will be limited and battery charging will stop.
- If the device overheats or feels hot for a prolonged period, turn off the device, and wait until it cools down.

Precautions for operating environment

Your device may heat up due to the environment in the following conditions. Use caution to avoid shortening the battery's lifespan, damaging the device, or causing a fire.

- Do not store your device in very cold or very hot temperatures.
- Do not expose your device to direct sunlight for extended periods.
- Do not use or store your device for extended periods in very hot areas, such as inside a car in the summertime.

- Do not place the device in any areas that may overheat, such as on an electric heating mat.
- Do not store your device near or in heaters, microwaves, hot cooking equipment, or high pressure containers.
- Never use a damaged charger or battery.

Package contents

Check the product box for the following items:

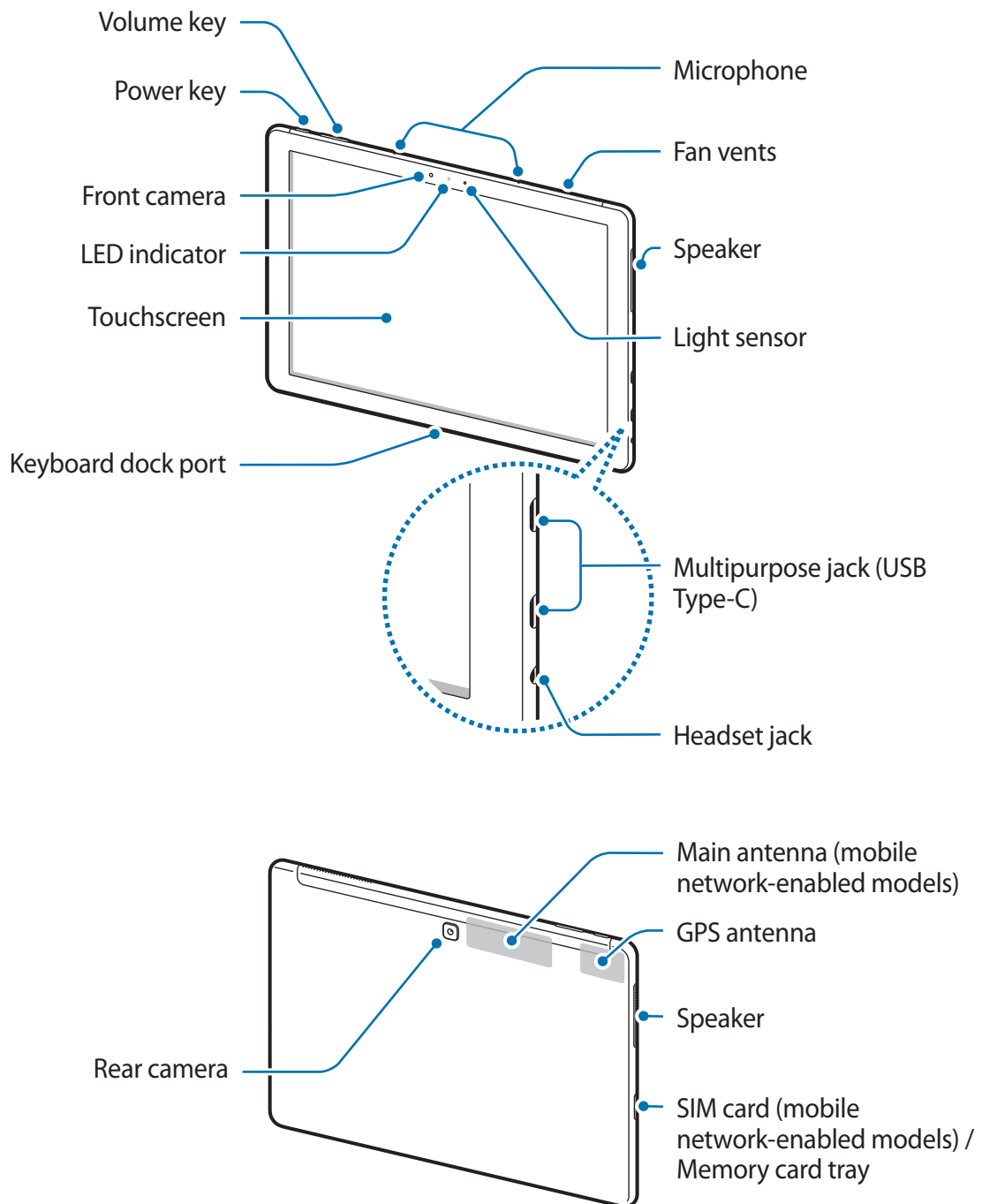
- Device
- Keyboard Cover
- S Pen
- S Pen holder
- Quick start guide



- The items supplied with the device and any available accessories may vary depending on the region or service provider.
- The supplied items are designed only for this device and may not be compatible with other devices.
- Appearances and specifications are subject to change without prior notice.
- You can purchase additional accessories from your local Samsung retailer. Make sure they are compatible with the device before purchase.
- Use only Samsung-approved accessories. Using unapproved accessories may cause the performance problems and malfunctions that are not covered by the warranty.
- Availability of all accessories is subject to change depending entirely on manufacturing companies. For more information about available accessories, refer to the Samsung website.

Device layout

Device





The device and the Keyboard Cover contain magnets. The American Heart Association (US) and the Medicines and Healthcare Products Regulatory Agency (UK) both warn that magnets can affect the operation of implanted pacemakers, cardioverters, defibrillators, insulin pumps or other electro medical devices (collectively, “Medical Device”) within the range of 15 cm (6 inches). If you are a user of any of these Medical Devices, DO NOT USE THIS DEVICE AND THE KEYBOARD COVER UNLESS YOU HAVE CONSULTED WITH YOUR PHYSICIAN.





Do not store your device and the Keyboard Cover near magnetic fields. Magnetic stripe cards, including credit cards, phone cards, passbooks, and boarding passes, may be damaged by magnetic fields.

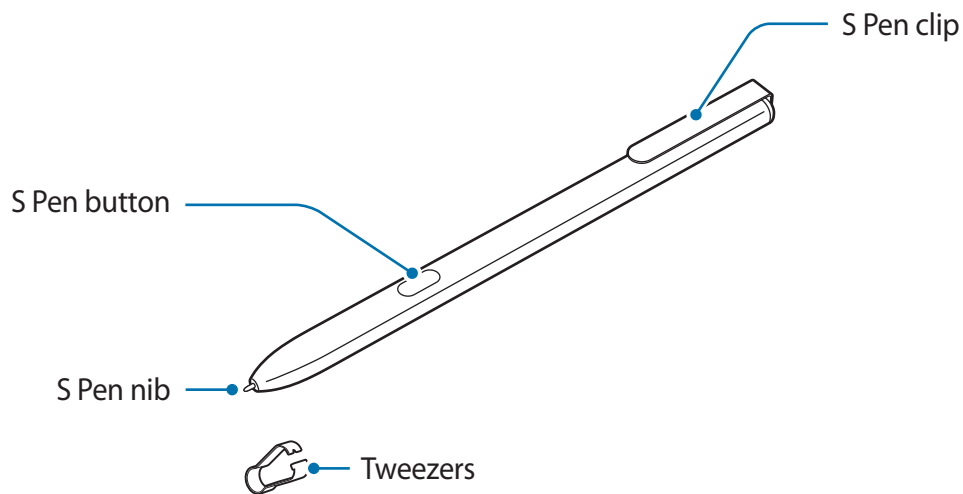


- Connectivity problems and battery drain may occur in the following situations:
 - If you attach metallic stickers on the antenna area of the device
 - If you attach a device cover made with metallic material to the device
 - If you cover the device’s antenna area with your hands or other objects while using certain features, such as the mobile data connection
- Using a Samsung-approved screen protector is recommended. Unapproved screen protectors may cause the sensors to malfunction.
- Do not allow water to contact the touchscreen. The touchscreen may malfunction in humid conditions or when exposed to water.

Keys

Key	Function
 Power	<ul style="list-style-type: none"> • Press and hold to turn the device on or off. • Press to turn on or lock the screen.
 Volume	<ul style="list-style-type: none"> • Press to adjust the device volume.

S Pen



Name	Functions
S Pen nib	<ul style="list-style-type: none">• Use the S Pen to write, draw, or perform touch actions on the screen.• Hover the S Pen over items on the screen to access additional S Pen features.
S Pen button	<ul style="list-style-type: none">• Hover the S Pen over the screen and press the S Pen button to display the air command features.
Tweezers	<ul style="list-style-type: none">• Remove the S Pen nib with the tweezers when replacing the nib.

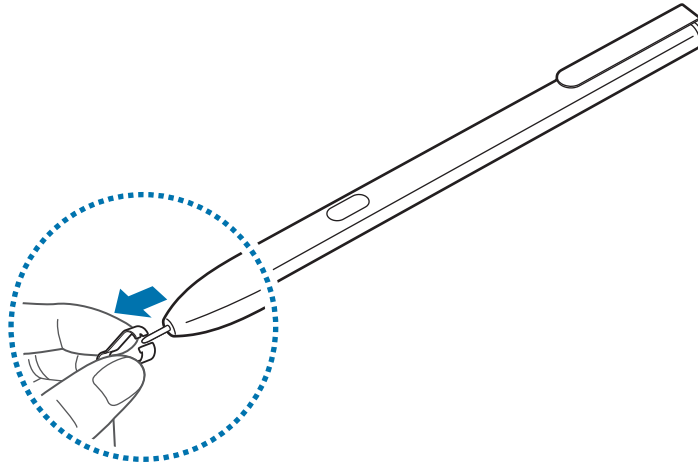


The supplied S Pen is already calibrated. Do not calibrate the screen for pen input randomly. Doing so may cause performance degradation or malfunction.

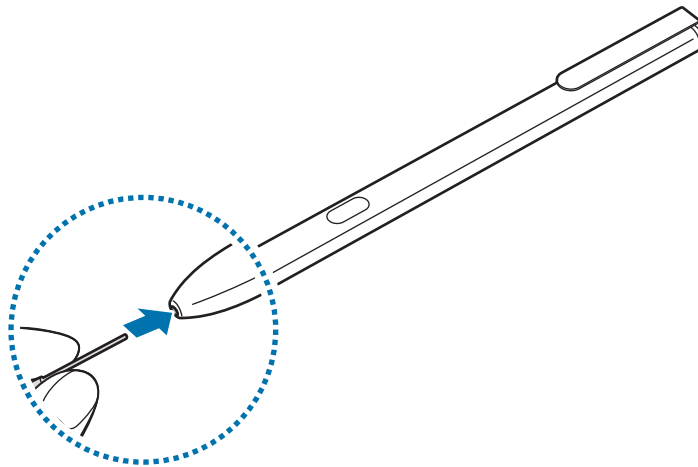
Replacing the S Pen nib

If the nib is dull, replace it with a new one.

- 1 Firmly hold the nib with the tweezers and remove it.



- 2 Insert a new nib into the S Pen.





Be careful not to pinch your fingers with the tweezers.



- Do not reuse old nibs. Doing so may cause the S Pen to malfunction.
- Do not press the nib excessively when inserting the nib into the S Pen.
- Do not insert the round end of the nib into the S Pen. Doing so may cause damage to the S Pen or your device.
- Do not bend or apply excessive pressure with the S Pen while using it. The S pen may be damaged or the nib may be deformed.
- The S Pen may not be attached firmly if you clip it on the objects that are too thick or too thin.



- If the S Pen is not working properly, take it to a Samsung Service Centre.
- If you use the S Pen at sharp angles on the screen, the device may not recognise the S Pen actions. Do not bend or apply excessive pressure with the S Pen while using it.
- For more information about the S Pen, visit the Samsung website.

Battery

Charging the battery

Charge the battery before using it for the first time or when it has been unused for extended periods.



Use only Samsung-approved chargers supplied with the device, batteries, and cables. Unapproved chargers or cables can cause the battery to explode or damage the device.

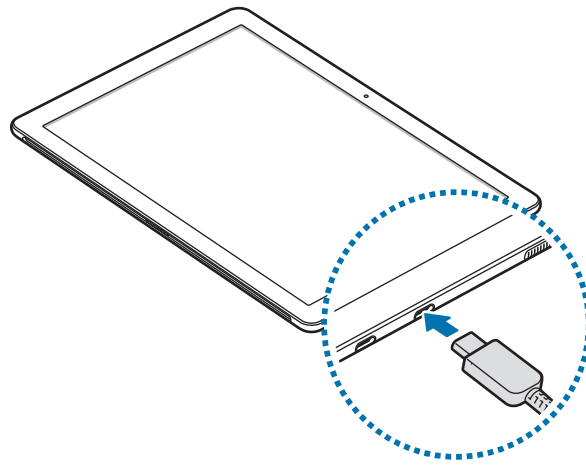


Connecting the charger improperly may cause serious damage to the device. Any damage caused by misuse is not covered by the warranty.



To save energy, unplug the charger when not in use. The charger does not have a power switch, so you must unplug the charger from the electric socket when not in use to avoid wasting power. The charger should remain close to the electric socket and easily accessible while charging.

- 1 Connect the USB cable to the USB power adaptor, and plug the USB cable into the device's multipurpose jack.



- 2 Plug the USB power adaptor into an electric socket.
- 3 After fully charging, disconnect the device from the charger. First unplug the charger from the device, and then unplug it from the electric socket.

Viewing the remaining charging time

While charging, on the taskbar, tap  →  → **System** → **Battery**.



The actual charging time may vary depending on the status of your device and the charging conditions. The estimated charging time may not be displayed when you charge the device in very cold or very hot conditions.

Reducing the battery consumption

Your device provides various options that help you conserve battery power.




- When you are not using the device, switch to sleep mode by pressing the Power key or close the Keyboard Cover.
- Activate battery saver.
- Close unnecessary apps.
- Deactivate the Bluetooth feature when not in use.
- Deactivate the Wi-Fi feature when not in use.
- Deactivate auto-syncing of apps that need to be synced, such as emails.
- Decrease the backlight time.
- Decrease the screen brightness.

Battery charging tips and precautions

- Use the charger supplied with the device. It may take longer to charge the battery if you use other chargers.
- When the battery power is low, the battery icon appears empty.
- If the battery is completely discharged, the device cannot be turned on immediately when the charger is connected. Allow a depleted battery to charge for a few minutes before turning on the device.
- If you use multiple apps at once, network apps, or apps that need a connection to another device, the battery will drain quickly. To avoid losing power during a data transfer, always use these apps after fully charging the battery.
- Using a power source other than the charger, such as a computer, may result in a slower charging speed due to a lower electric current.
- The device can be used while it is charging, but it may take longer to fully charge the battery.
- If the device receives an unstable power supply while charging, the touchscreen may not function. If this happens, unplug the charger from the device.
- While charging, the device and the charger may heat up. This is normal and should not affect the device's lifespan or performance. If the battery gets hotter than usual, the charger may stop charging.
- If you charge the device while the multipurpose jack is wet, the device may be damaged. Thoroughly dry the multipurpose jack before charging the device.
- If the device is not charging properly, take the device and the charger to a Samsung Service Centre.

Battery saver

Save the battery power by limiting the device's activity running in the background and push notifications.

On the taskbar, tap  →  → **System** → **Battery**, and then tap the **Battery saver status until next charge** switch to activate it. Alternatively, on the taskbar, tap  → **Battery saver** to activate it.

To automatically activate battery saver mode when the remaining battery power reaches the preset level, tap **Turn battery saver on automatically if my battery falls below:** and set the battery level.

SIM or USIM card (mobile network-enabled models)

Installing the SIM or USIM card

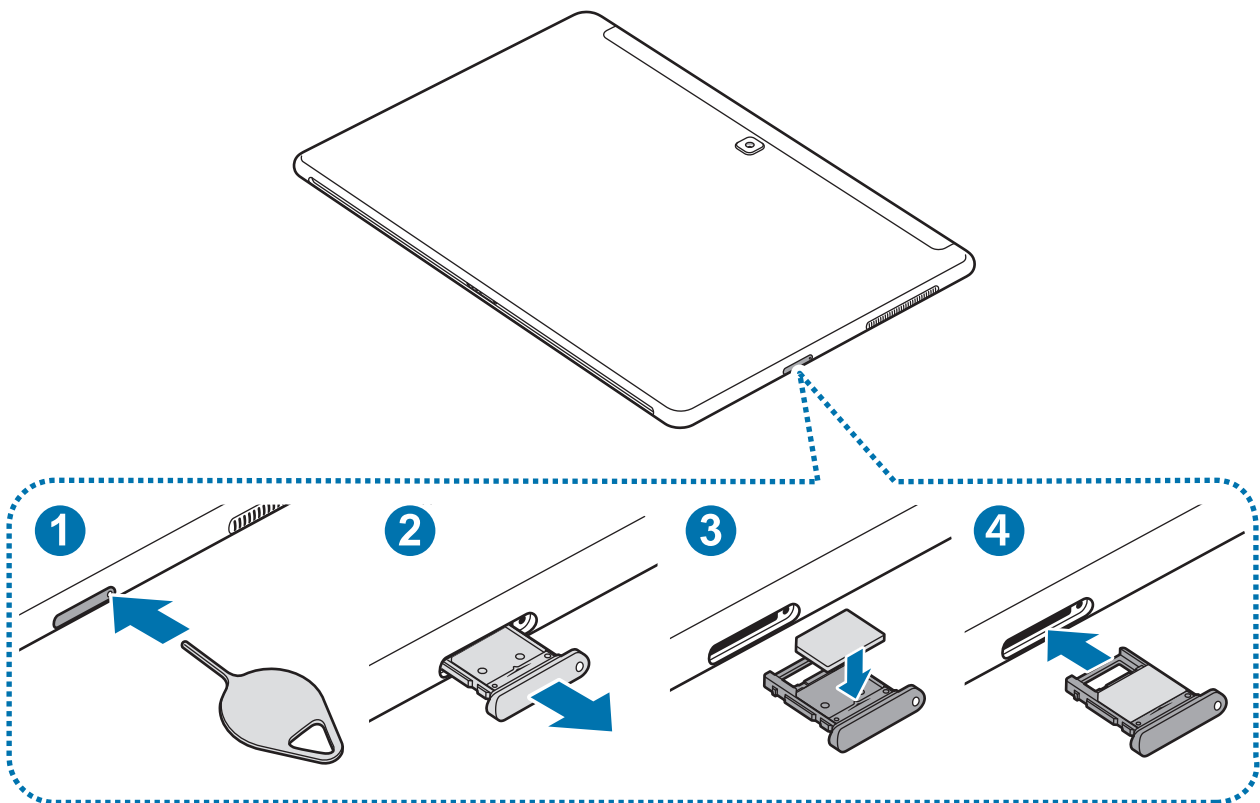
Insert the SIM or USIM card provided by the mobile telephone service provider.



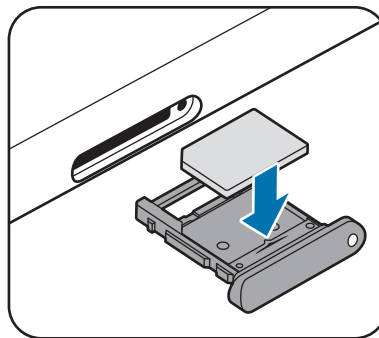
- Use only a nano-SIM card.
- Use caution not to lose or let others use the SIM or USIM card. Samsung is not responsible for any damages or inconveniences caused by lost or stolen cards.



- It is only for data network. Calling and messaging features are not supported except for receiving messages.
- Some LTE services may not be available depending on the service provider. For more information about service availability, contact your service provider.



- 1 Place the device with the bottom facing upwards.
- 2 Insert the ejection pin into the hole on the tray to loosen the tray.
- ⚠ Ensure that the ejection pin is perpendicular to the hole. Otherwise, the device may be damaged.
- 3 Pull out the tray gently from the tray slot.
- 4 Place the SIM or USIM card on the tray with the gold-coloured contacts facing upwards.

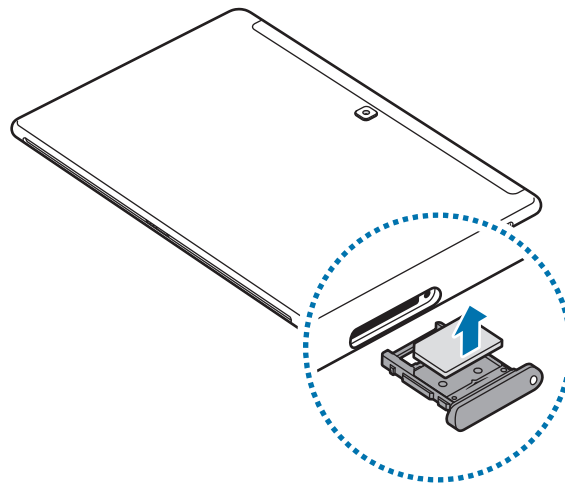


- 5 Gently press the SIM or USIM card into the tray to secure it.
- ⚠ If the card is not fixed firmly into the tray, the SIM card may leave or fall out of the tray.
- 6 Insert the tray back into the tray slot.
- ⚠
 - If you insert the tray into your device while the tray is wet, your device may be damaged. Always make sure the tray is dry.
 - Fully insert the tray into the tray slot to prevent liquid from entering your device.

Removing the SIM or USIM card

- 1 Insert the ejection pin into the hole on the tray to loosen the tray.
- 2 Pull out the tray gently from the tray slot.

3 Remove the SIM or USIM card.



4 Insert the tray back into the tray slot.

Memory card (microSD card)

Installing a memory card

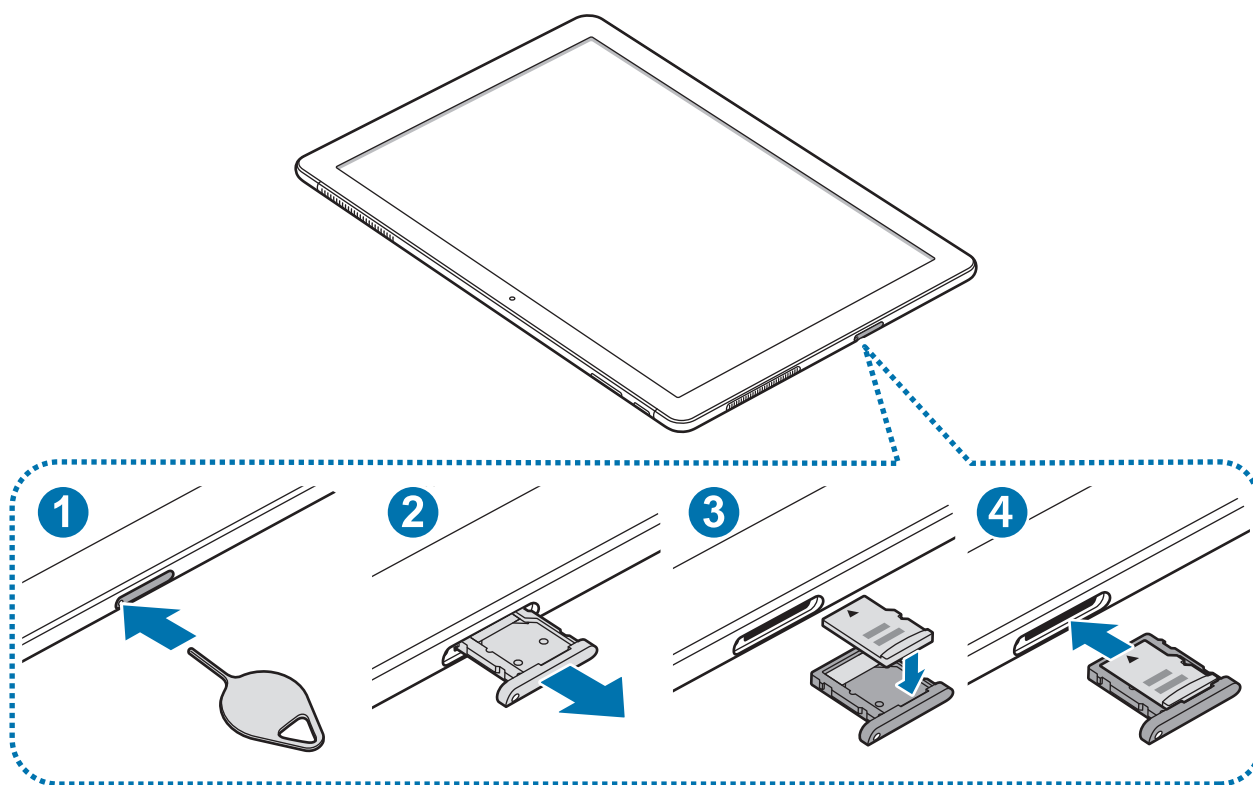
Your device's memory card capacity may vary from other models and some memory cards may not be compatible with your device depending on the memory card manufacturer and type. To view your device's maximum memory card capacity, refer to the Samsung website.




- Some memory cards may not be fully compatible with the device. Using an incompatible card may damage the device or the memory card, or corrupt the data stored in it.
- Use caution to insert the memory card right-side up.




- The device supports the FAT and the exFAT file systems for memory cards. When inserting a card formatted in a different file system, the device will ask to reformat the card or will not recognise the card. If the device does not recognise your memory card, format it on your computer.
- Frequent writing and erasing of data shortens the lifespan of memory cards.
- When inserting a memory card into the device, the memory card's file directory appears in the **File Explorer** → **Secure Digital storage device** folder.



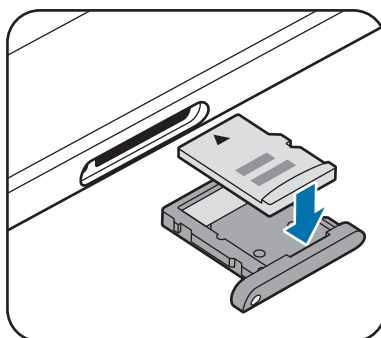
1 Insert the ejection pin into the hole on the tray to loosen the tray.

 Ensure that the ejection pin is perpendicular to the hole. Otherwise, the device may be damaged.

2 Pull out the tray gently from the tray slot.

 When you remove the tray from the device, the mobile data connection will be disabled.

3 Place a memory card on the tray with the gold-coloured contacts facing downwards.



4 Gently press the memory card into the tray to secure it.


5 Insert the tray back into the tray slot.



- If you insert the tray into your device while the tray is wet, your device may be damaged. Always make sure the tray is dry.
- Fully insert the tray into the tray slot to prevent liquid from entering your device.

Removing the memory card

Before removing the memory card, first unmount it for safe removal.

On the taskbar, tap  , and then select the ejection option.

1 Insert the ejection pin into the hole on the tray to loosen the tray.

2 Pull out the tray gently from the tray slot.

3 Remove the memory card.

4 Insert the tray back into the tray slot.



Do not remove the memory card while the device is transferring or accessing information. Doing so can cause data to be lost or corrupted or damage to the memory card or device. Samsung is not responsible for losses that result from the misuse of damaged memory cards, including the loss of data.

Formatting the memory card

A memory card may not be compatible with the device, so format the memory card on the device.

On the taskbar, tap  → **Windows System** → **File Explorer** → **This PC**, tap and hold **Secure Digital storage device**, and then tap **Format...**



Before formatting the memory card, remember to make backup copies of all important data stored in the memory card. The manufacturer's warranty does not cover loss of data resulting from user actions.




Turning the device on and off

Press and hold the Power key for a few seconds to turn on the device.



Before turning on your device for the first time, you must connect the device to a power supply.

When you turn on your device for the first time or after performing a data reset, follow the on-screen instructions to set up your device.

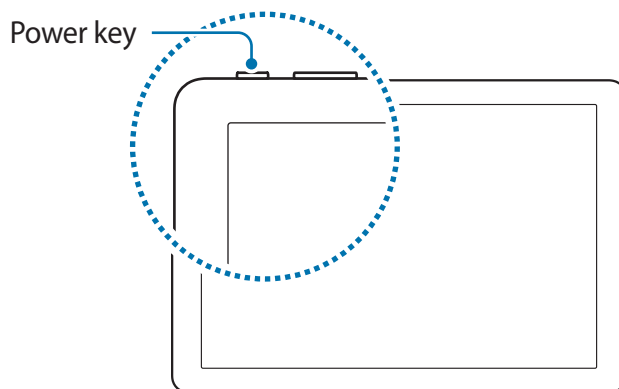
To turn off the device, tap  →  → **Shut down**. In Tablet mode, tap  → **Shut down**. Alternatively, press and hold the Power key until **Slide to shut down your PC** appears, and then drag the screen downwards.



Follow all posted warnings and directions from authorised personnel in areas where the use of wireless devices is restricted, such as aeroplanes and hospitals.

Restarting the device



If your device is frozen and unresponsive, press and hold the Power key for more than 10 seconds until the device turns off. Then, press and hold the Power key again to restart it.



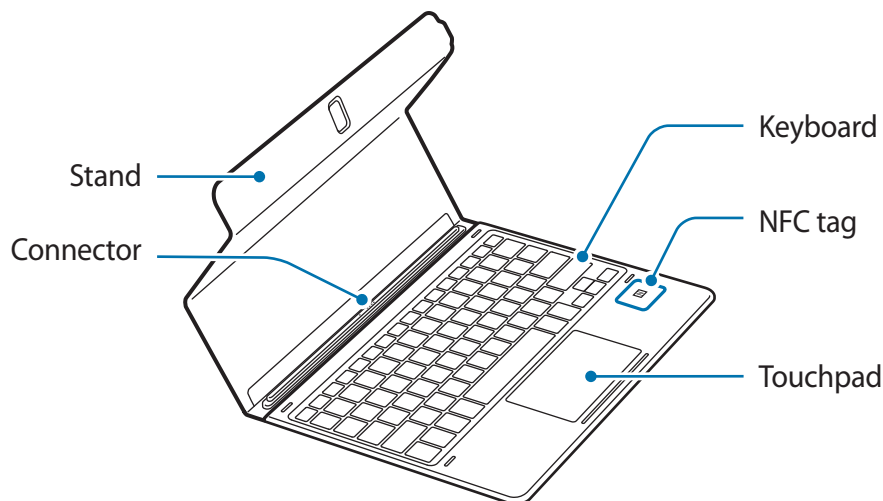
Keyboard Cover

Introduction

Connect the device to the Keyboard Cover. The bottom of the touchpad acts as the left and right buttons of a mouse.

When you close the Keyboard Cover, your device will enter sleep mode. When you open the cover, the touchscreen will turn on. To change the settings, tap  →  → **System** → **Power & sleep** → **Additional power settings** → **Choose what closing the lid does**, and then configure the **When I close the lid:** settings.

Keyboard Cover



Do not remove keycaps from the keyboard. Doing so may damage the keyboard and the keycaps.



The function of the NFC tag may differ depending on the model and region.

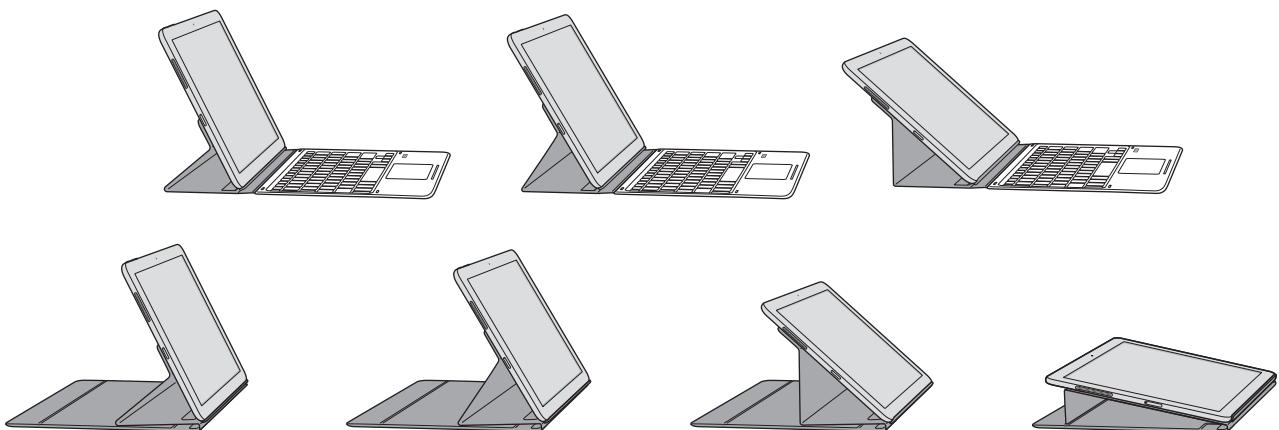
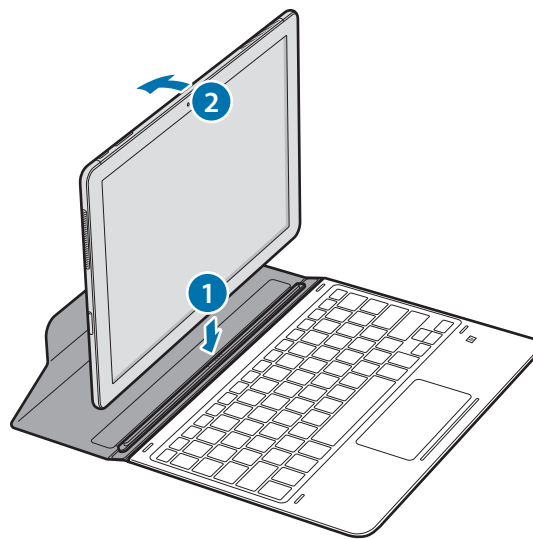
Connecting the Keyboard Cover

1 Connect the keyboard dock port at the bottom of the device to the connector on the keyboard.



Make sure that the Keyboard Cover is securely attached to your device. If not, check the location of the keyboard dock port and reconnect the Keyboard Cover to your device.

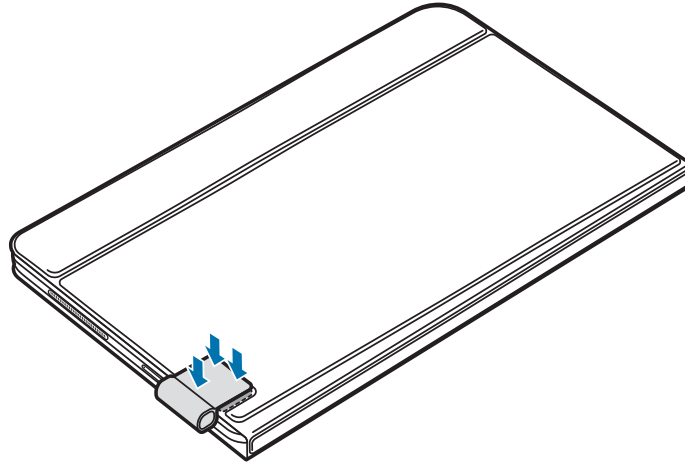
2 Attach the device to the stand.



You can attach the device to the stand in various angles.

Attaching the S Pen holder

Attach the S Pen holder to the S Pen holder slot. You can insert the S Pen into the S Pen holder.

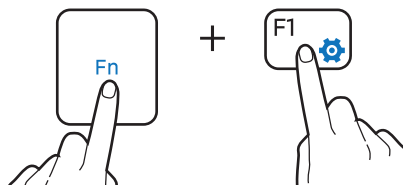


- Make sure that the S Pen holder is securely attached after 1 hour.
- To avoid detaching the holder from the keyboard cover, do not apply excessive force.

Hot keys

Use hot keys to easily use features and change settings, such as brightness and volume.












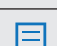

To use hot keys, simultaneously press and hold the **Fn** key and press a hot key.



If you lock the **Fn** key, you can use hot keys without pressing the **Fn** key. To lock the **Fn** key, tap the **Fn Lock** key.

The **Fn Lock** key will automatically unlock when you reconnect the device and the Keyboard Cover.

Hot key functions

Key/Icon		Function
F1		• Launch Settings .
F2		• Adjust the brightness of the display.
F3		
F4		• Change the display mode when an external display is connected to the device.
F5		• Lock or unlock the touchpad.
F6		• Mute or unmute the audio.
F7		• Adjust the volume.
F8		
F9		• Turn the keyboard backlight on or off.
F10		• Open the task view screen.
F11		• Hide or show currently open windows.
F12		• Activate or deactivate flight mode.
		• Perform the same function as the right buttons of a mouse.

Touchpad

Use the touchpad to move the cursor or select items. The left and right buttons of the touchpad function the same as the left and right buttons of a mouse.

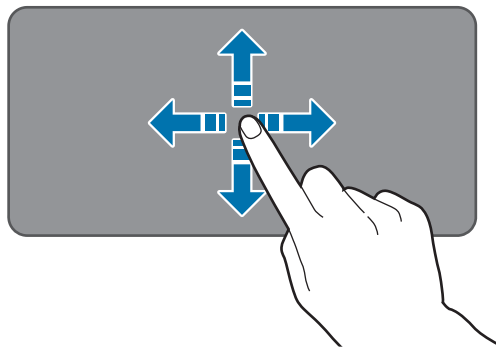


Use only your fingers on the touchpad. The touchpad may not recognise the S Pen or the other tools.

Basic touchpad functions

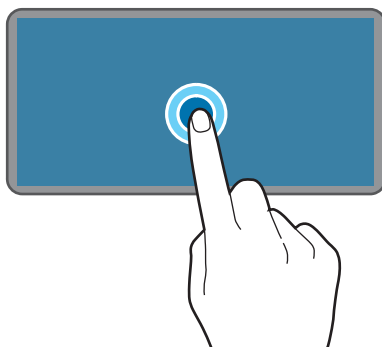
Moving

To move the cursor, move your finger on the touchpad.

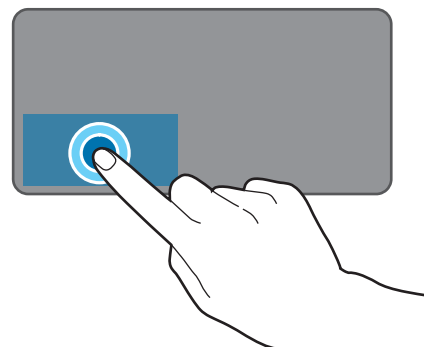


Clicking

Tap the touchpad or press the left-click button.

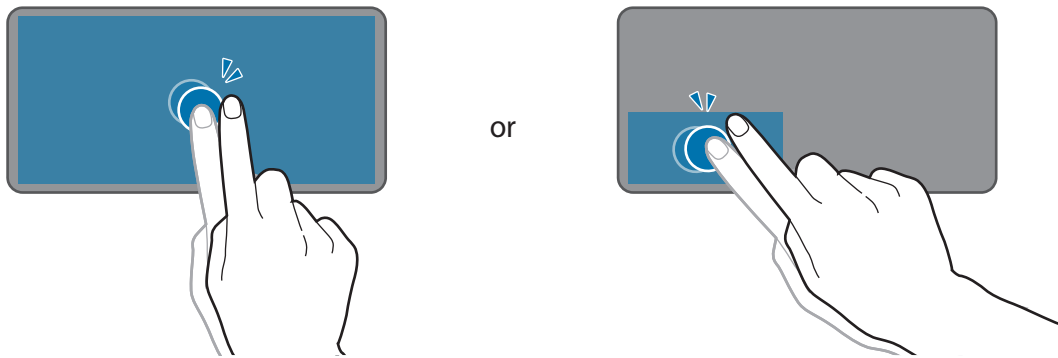


or



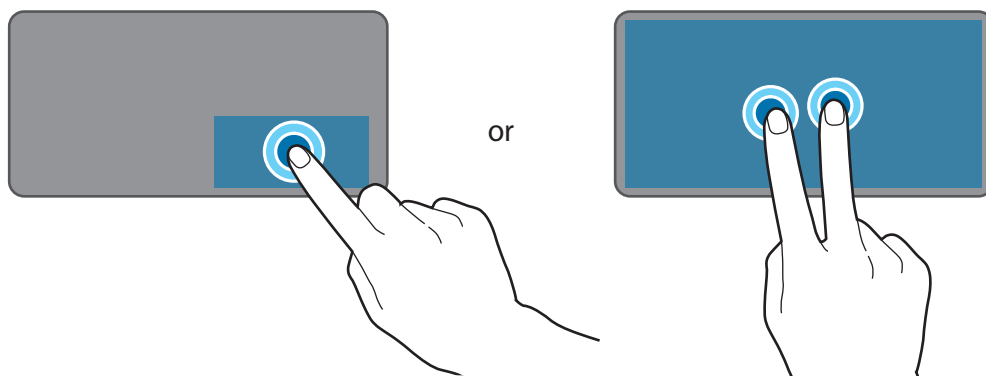
Double-clicking

Double-tap the touchpad or press the left-click button twice.



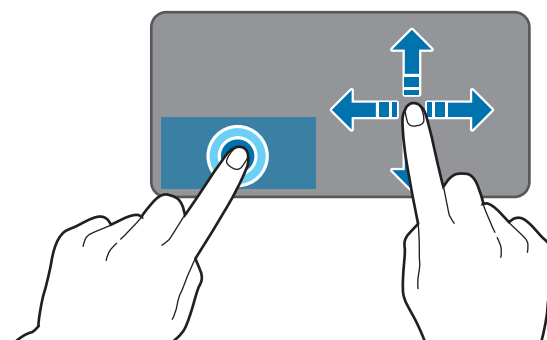
Right-clicking

Press the right-click button to perform the right-click function. Alternatively, tap the touchpad with two fingers.



Dragging

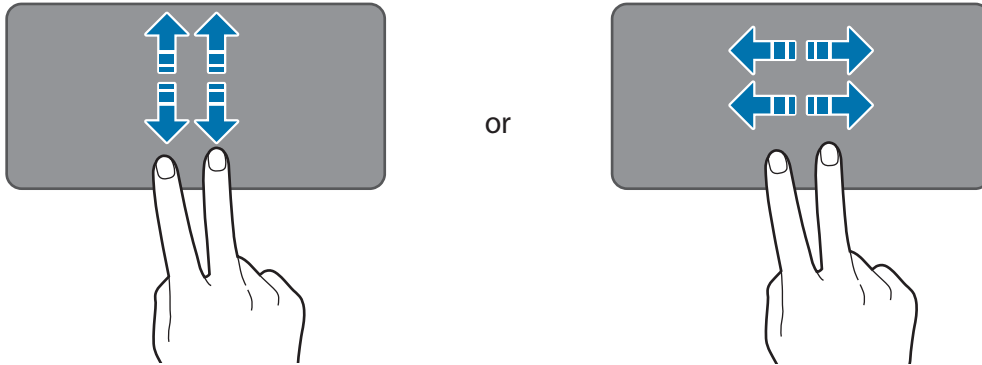
To move an item, select and drag it to the target position while pressing and holding the left-click button.



Additional functions

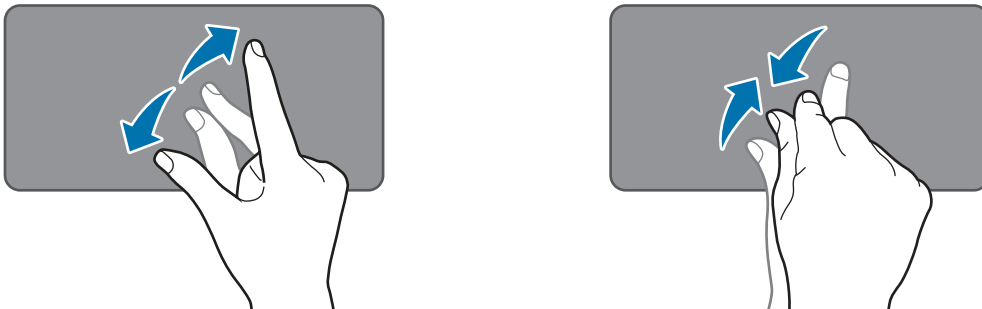
Swiping

To scroll up, down, left, or right to a desired location, swipe with two fingers on the touchpad.



Spreading and pinching

Spread two fingers apart on a webpage, map, or image to zoom in a part. Pinch to zoom out.



Configuring touchpad settings

Configure touchpad settings to use the touchpad more efficiently.

Tap  →  → **Devices** → **Mouse & touchpad**, and configure the settings under **Touchpad**.

Locking and unlocking the touchpad

Press and hold the **Fn** key and press the **F5** key to lock or unlock the touchpad.

If the touchpad was locked when it was disconnected, it will still be locked when you reconnect the Keyboard Cover. To use the touchpad again, unlock it manually.

Controlling the touchscreen



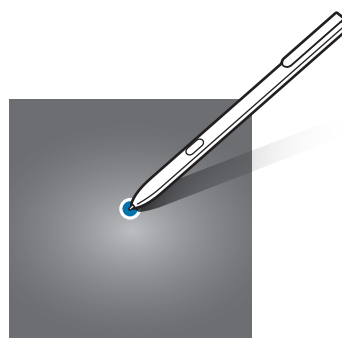
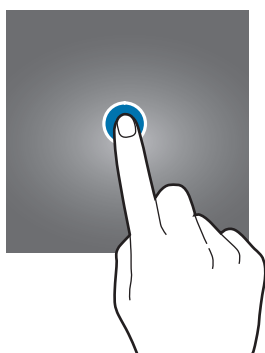
- Do not allow the touchscreen to come into contact with other electrical devices. Electrostatic discharges can cause the touchscreen to malfunction.
- To avoid damaging the touchscreen, do not tap it with anything sharp or apply excessive pressure to it with your fingertips.



- The device may not recognise touch inputs close to the edges of the screen, which are outside of the touch input area.
- Leaving the touchscreen idle for extended periods may result in afterimages (screen burn-in) or ghosting. Turn off the touchscreen when you do not use the device.
- It is recommended to use fingers or the S Pen when you use the touchscreen.

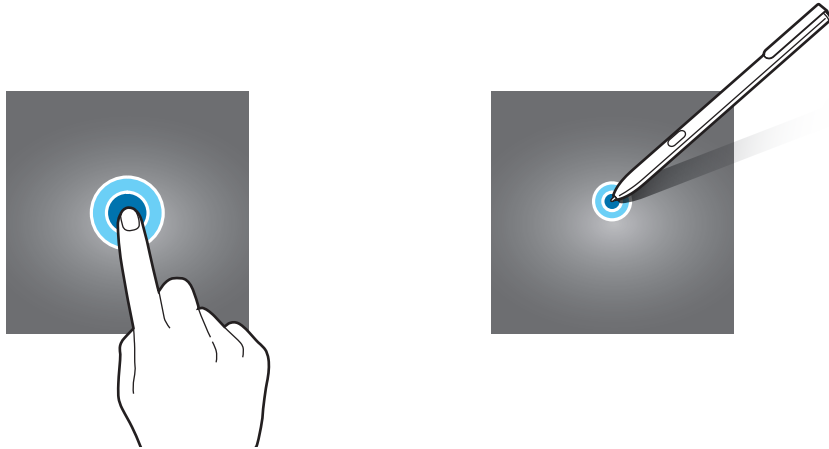
Tapping

To open an app, to select a menu item, to press an on-screen button, or to enter a character using the keyboard on the screen, tap it with your finger or the S Pen.



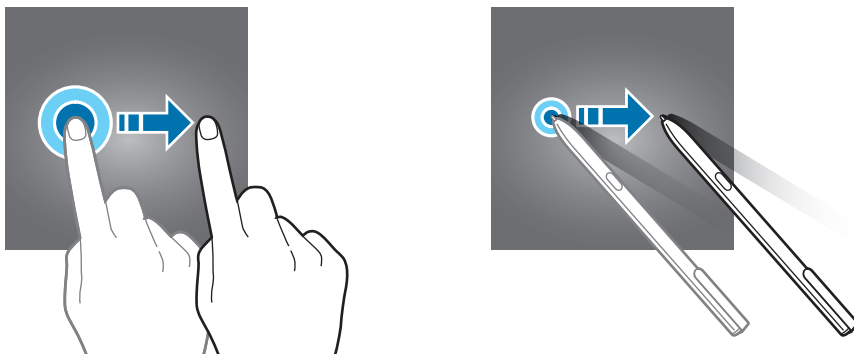
Tapping and holding

Tap and hold an item or the screen for more than 2 seconds to access available options.



Dragging

To move an item, tap and hold it and drag it to the target position.



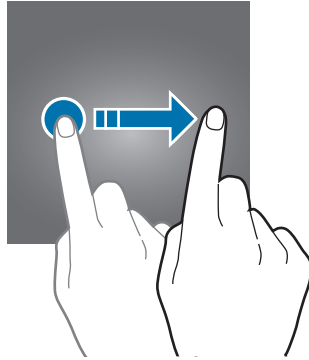
Double-tapping

Double-tap on a webpage or image to zoom in. Double-tap again to return.



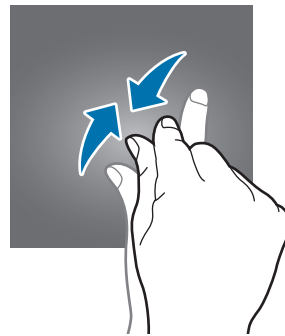
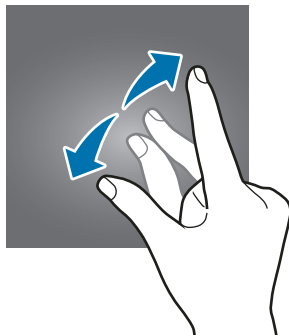
Swiping

Swipe to the left or right on the screen to scroll left or right. Swipe upwards or downwards to scroll through a webpage or a list of items.



Spreading and pinching

Spread two fingers apart on a webpage, map, or image to zoom in a part. Pinch to zoom out.



Windows

Microsoft Windows is an operating system that is used to control a computer.



- Images and available features may differ depending on the model and operating system.
- This manual is designed for Windows 10 and content may differ depending on the OS version.
- The image displayed on the desktop screen may differ between models and OS versions.

Start screen

Start screen

The Start screen is the starting point for accessing all of the device's features.



Moving and removing an item



Drag an item on the Start screen to a new location.

To remove an item, tap and hold the item, and then tap **Delete**.

Taskbar

The bottom area of the screen is the taskbar. You can access the Start menu, launch the search box, view notification icons, and more on the taskbar.



Managing shortcuts

To add a shortcut, on the taskbar, tap , tap and hold an item, tap **More** or tap  → **More**, and then tap **Pin to taskbar**.

To delete a shortcut, tap and hold a shortcut, and then tap **Unpin from taskbar**.

To move a shortcut to another location, drag it to a new location.

Managing notification icons

On the taskbar, tap  →  → **Personalisation** → **Taskbar** → **Select which icons appear on the taskbar**, and then select items to display in the notification area.

Search box

Search for a wide variety of content on the device or web with a keyword.

Tap the search box on the taskbar and enter a keyword in the search field.

Cortana

If **Cortana** is supported in your region, it will launch when you tap the search box. **Cortana** will help you find things on your device, manage your schedules, and more. Enter a keyword or question into the search field to search for something, set a reminder, and more.

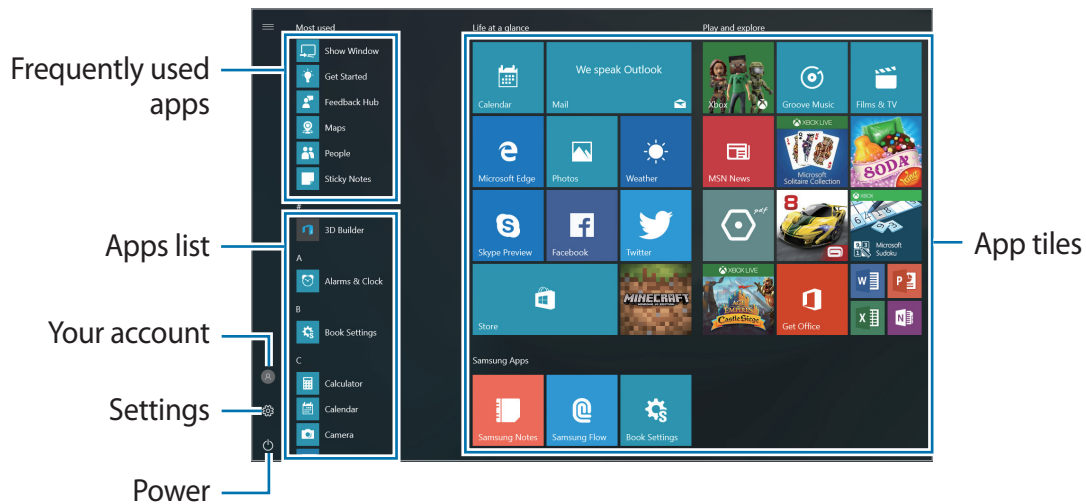


This feature may not be available depending on the region and language settings.

Start menu

On the taskbar, tap  to open the Start menu.

From the Start menu, you can access your frequently used apps, shortcuts to other locations on your device, and more.



Managing app tiles

You can pin your favourite apps on the app tile area.

To add more apps, tap and hold an app from the apps list, and then drag it to the app tile area.

To move a tile, tap and hold a tile, and then drag it to a new location.

To adjust the size of a tile, tap and hold a tile, and then tap  → **Resize**.

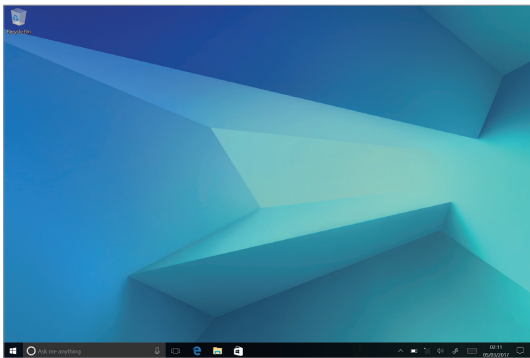
To delete a tile, tap and hold a tile, and then tap .

Switching to tablet mode

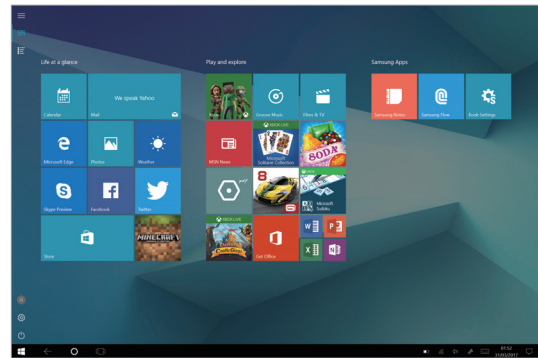
You can switch between PC mode and tablet mode. In Tablet mode, the full Start menu screen will be the Start screen. Switching to tablet mode makes the device more touch-friendly.

To switch to tablet mode, on the taskbar, tap  → **Tablet mode**. Alternatively, Swipe from the right edge of the screen towards the centre of the screen, then tap **Tablet mode**.

To return to PC mode, tap **Tablet mode** again.



Pc mode



Tablet mode

Lock screen

You can change the way that you lock the screen to prevent others from accessing your personal information.

On the taskbar, tap  →  → **Accounts** → **Sign-in options**, and then select a screen lock method. The device requires an unlock code whenever unlocking it.



- If the unlock code is forgotten, take the device to a Samsung Service Centre to reset it.
- You must sign in to your Microsoft account or add a password before you can use the other lock methods.

Password

A password consists of characters or numbers. Enter a password, enter the password again to verify it, and then enter a password hint.

If you have signed in to your Microsoft account, your account password will be set as the password automatically.


PIN

A PIN consists of numbers only. Enter at least four numbers, and then enter the password again to verify it.

Picture password

A password consists of circles, straight lines, and taps. Select an image and draw on the image to create gestures.


Pattern Log-in

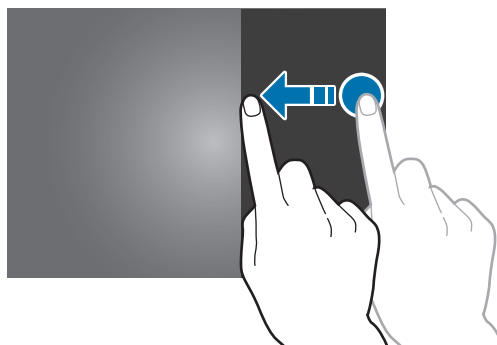
To unlock the screen using a pattern, on the taskbar, tap  → **Book Settings** → **Pattern Log-in**, and then tap the switch to activate it.

Draw a pattern by connecting four dots or more, and then draw the pattern again to verify it.

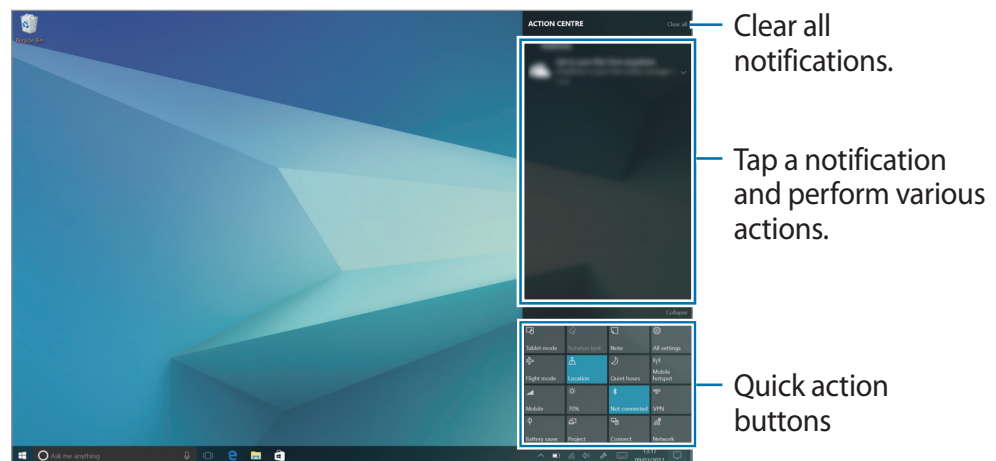
ACTION CENTRE

You can view new notifications from Windows and apps, and use quick action buttons. Quick action buttons allow you to easily adjust frequently used settings, such as activating Wi-Fi.

To open the action centre panel, on the taskbar, tap . Alternatively, swipe from the right edge of the screen.


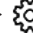


You can use the following functions on the action centre panel.



Using quick action buttons

Tap quick action buttons to activate certain features. To view more detailed settings, tap and hold a button, and then tap **Go to settings**.

You can change the top four buttons. On the taskbar, tap  →  → **System** → **Notifications & actions**, and then change quick action buttons under **Quick actions**.

Multi desktop

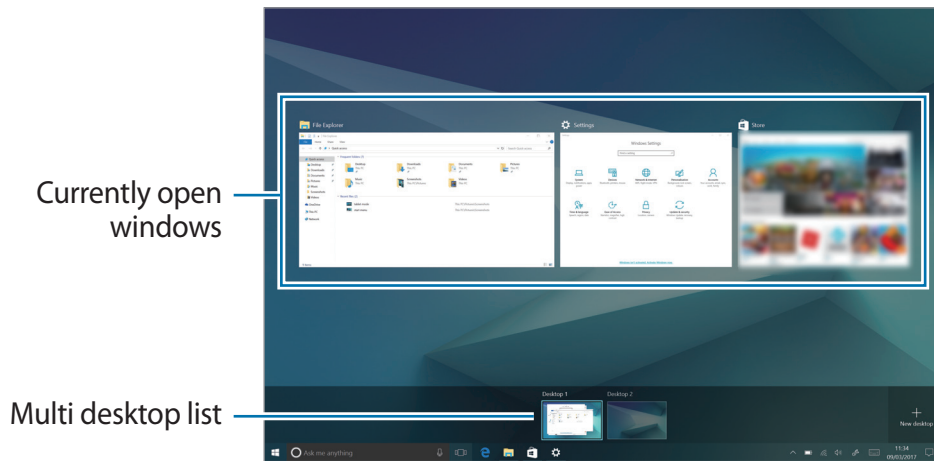
Multi desktop allows you to work on various tasks at the same time via multiple desktops. You can use different desktops for a variety of purposes.

Creating new desktops

1 On the taskbar, tap []. Alternatively, swipe from the left edge of the screen.

2 Tap **New desktop**.

A new desktop will be added. You can select a desktop from the list displayed at the bottom of the screen.



Deleting desktops

- 1 On the taskbar, tap [□].
- 2 On the multi desktop list, tap ✕ on the desktop to delete.

Moving windows to another desktop

- 1 On the taskbar, tap [□] to view the current desktop's open windows.
- 2 Tap and hold a window to move, and then tap **Move to**.
- 3 Select a desktop to move the window.

Split screen view

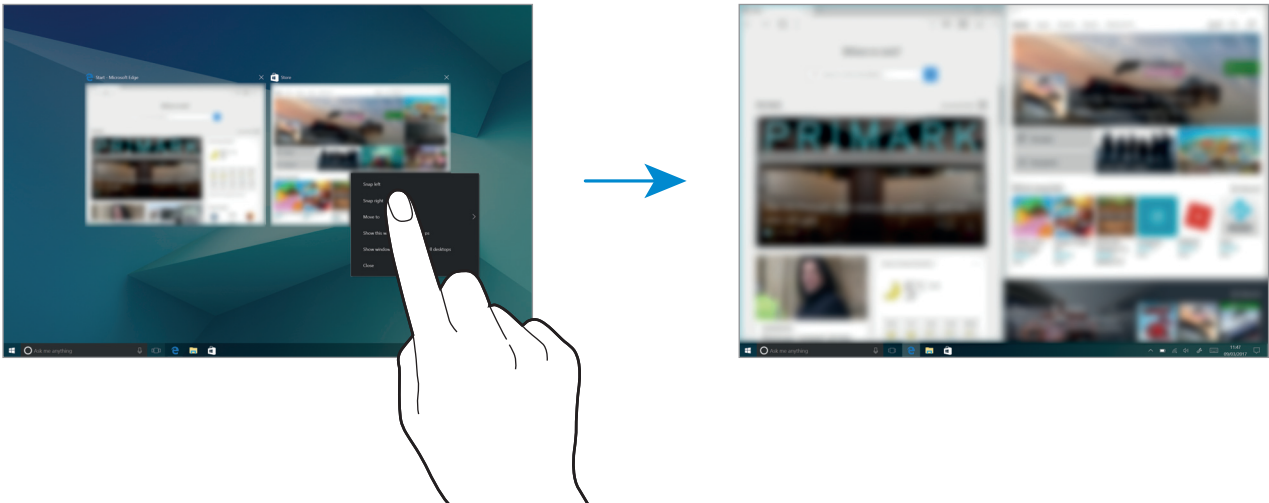
In Tablet mode, you can open two windows at the same time in the split screen view by selecting windows from the task view screen.



Some apps may not support this feature.

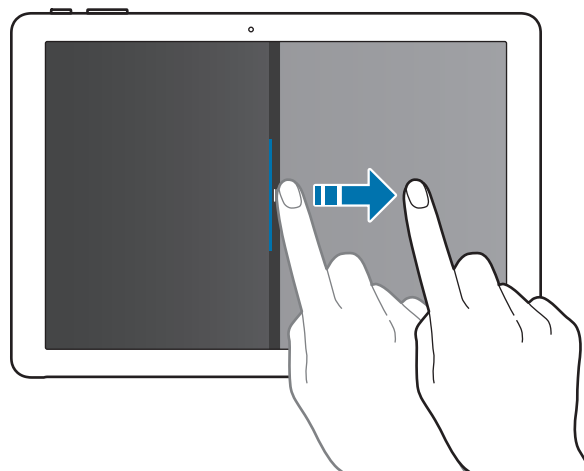
- 1 On the taskbar, tap [□] to view currently open windows. Alternatively, swipe from the left edge of the screen.

2 Tap and hold a window and select **Snap left** or **Snap right**.



Adjusting the window size

Drag the handle between the windows left or right to adjust the size of the windows.





Help

To access help information, tap  → **Get Started**.


Using the control panel

You can adjust basic system settings, such as hardware, software, or user account settings.

Tap  → **Windows System** → **Control Panel**. Alternatively, press the right-click button on  and tap **Control Panel**. Then, select options you want to change.

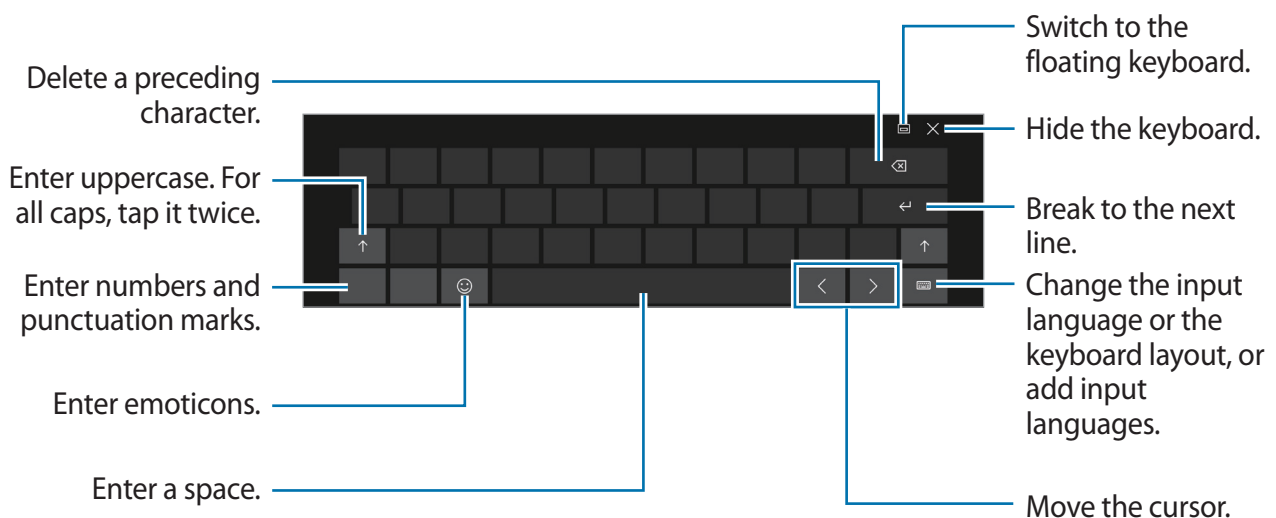
Entering text

Using the on-screen keyboard



In Tablet mode, the on-screen keyboard appears automatically when you enter text to send emails, create notes, and more. To use the on-screen keyboard in PC mode, on the taskbar, tap .



Text entry is not supported in some languages. To enter text, you must change the input language to one of the supported languages.






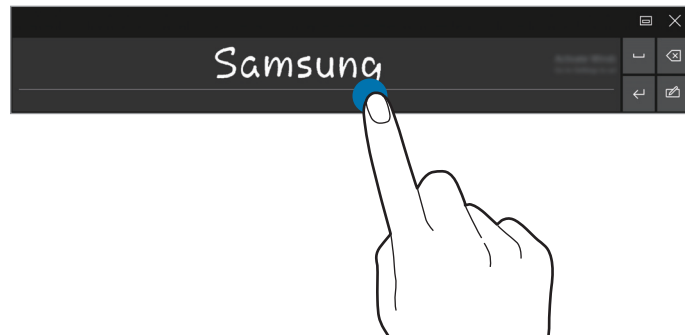
Changing the input language

Tap  → **Language preferences** → **Add a language**, and then select a language to add. When you add languages, you can select other input languages by tapping .




Additional keyboard functions

Tap  to use various functions.

-  : Switch to the default keyboard.
-  : Switch to the floating split keyboard. You can move the keyboard to another location by dragging the keyboard.
-  : Switch to handwriting mode.



This feature may not be available depending on the region or service provider.

-  : Switch to the standard keyboard. If this feature is not activated, on the taskbar, tap  →  → **Devices** → **Typing** and tap the **Add the standard keyboard layout as a touch keyboard option** switch to activate it.

Copying and pasting

- 1 Drag your finger across text to select it.
- 2 Tap and hold the text to display the options.
- 3 Tap **Copy** or **Cut**.
The selected text is copied to the clipboard.
- 4 Tap and hold where the text is to be inserted and tap **Paste**.

Using the Keyboard Cover

When your device is connected to the Keyboard Cover, you can enter text using the traditional keyboard. Refer to [Keyboard Cover](#) for more information.

Screen capture

Capture a screenshot while using the device.

You can view captured images in the **This PC** → **Pictures** → **Screenshots** folder.



It is not possible to capture a screenshot while using some apps and features.

Capturing screenshots with the S Pen

You can also use the Air command features to capture screenshots.

Screen write allows you to write on captured screenshots.



To select and capture a specific area, use **Smart select**.

Refer to [Screen write](#) and [Smart select](#) for more information.

Device and data management

Updating the device

Keep the device up to date by downloading and installing updates, such as service packs and patches, for the operating system and other Microsoft apps.

The device is set to download and install updates automatically. To check for available updates manually, on the taskbar, tap  →  → **Update & security** → **Windows Update** → **Check for updates**.

Backing up and restoring data

Keep your personal information, app data, and settings safe on your device using **Samsung Recovery**. Refer to [Samsung Recovery](#) for more information.

Performing a data reset

Delete all settings and data on the device. Before performing a factory data reset, ensure you back up all important data stored on the device. Refer to [Restoring to factory default](#) and [Backing up the current system](#) for more information.

InstantGo (Modern standby)

InstantGo (Modern standby) is a low-power mode that allows the device to maintain network connectivity. When the screen turns off, the device will enter modern standby mode.

While the device is in modern standby mode, the device can still sync content, such as emails, from the cloud and run background apps. It also allows the device to wake from sleep instantly, faster than the traditional sleep and hibernation states.



Modern standby consumes more battery power than the traditional sleep mode.

To set this feature, tap → → **System** → **Power & sleep** → **Additional power settings** → **Choose what the power button does**, and then set the **When I press the power button:** and the **When I close the lid:** settings to **Hibernate**.

Connecting to an external display

You can connect your device to an external display, such as a TV or monitor, and view presentations or movies on the connected display. Connect your device to an external display using an HDMI cable and display adapter.



- HDMI cables and display adapters are sold separately.
- Use only a Samsung-approved display adapter. Performance problems and malfunctions caused by using unapproved accessories are not covered by the warranty.
- The method for connecting to an external display may differ depending on cable or adapter types. The following actions are based on using an HDMI cable.

- 1 Connect the display adapter to the multipurpose jack of the device.
- 2 Connect the HDMI cable into the display adapter and to a HDMI port of the external display.
- 3 Turn on the external display and change its display mode to one that supports an external input.
- 4 Press and hold the **Fn** key and press the **F4** key several times simultaneously.
- 5 Select a mode from the list.

Applications

Installing or uninstalling apps

Store

Purchase and download apps.

On the taskbar, tap . Alternatively, on the taskbar, tap  → **Store**.




For service requests for apps provided by third-party providers, contact the provider. If you contact a Samsung Service Centre, troubleshooting actions in response to service requests may have limitations depending on the app.

Installing apps

Browse apps by category or tap the search field to search for a keyword.

Select an app to view information about it. To download free apps, tap **Free**. To purchase and download apps where charges apply, tap the price and follow the on-screen instructions.



To change the auto update settings, tap  → **Settings**, and then tap the **Update apps automatically when I'm on WiFi** switch to activate or deactivate it.

Uninstalling apps



Some apps cannot be uninstalled.

1 On the taskbar, tap .

2 Tap and hold an app, and then tap **Uninstall**.

Some apps will automatically move to the **Uninstall or change a program** screen. Tap and hold an app, tap **Uninstall**, and then follow the on-screen instructions to uninstall the app.

3 Tap **Uninstall**.

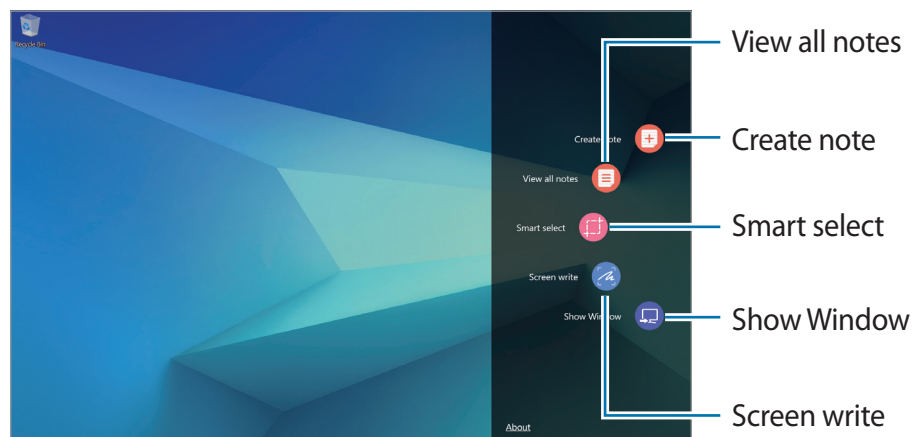
Air Command

Introduction

Air command is a menu that provides S Pen features.

To open the Air command panel, hover the S Pen over the screen and press the S Pen button.

Alternatively, tap  → **Samsung** → **Air Command**.

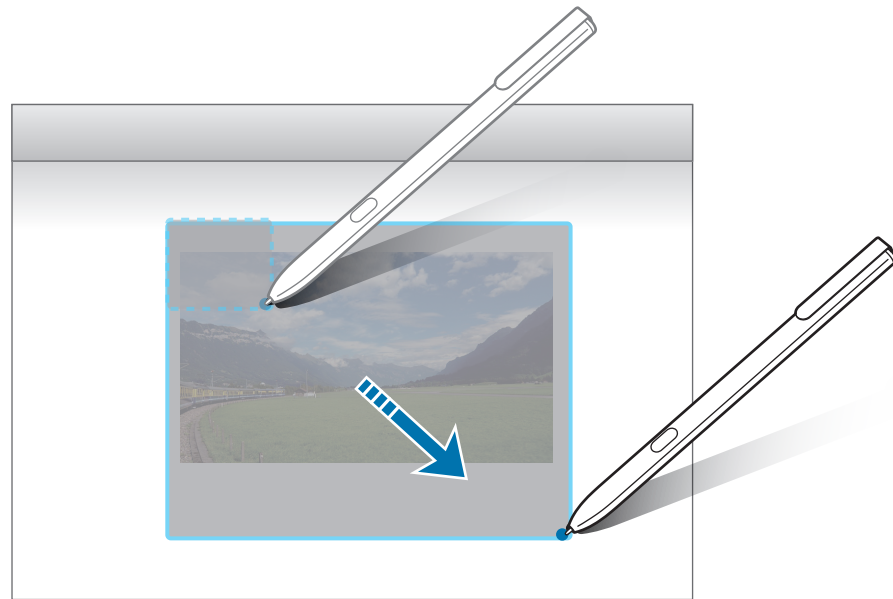


- **Create note:** Launch **Samsung Notes** and create a new note. Refer to [Samsung Notes](#) for more information.
- **View all notes:** Launch **Samsung Notes** and view all notes.
- **Smart select:** Collect content quickly. Refer to [Smart select](#) for more information.
- **Screen write:** Capture, edit, and write memos on screenshots, and then share them. Refer to [Screen write](#) for more information.
- **Show Window:** Select an area on the screen and show it in full screen mode on an external display. Refer to [Show Window](#) for more information.

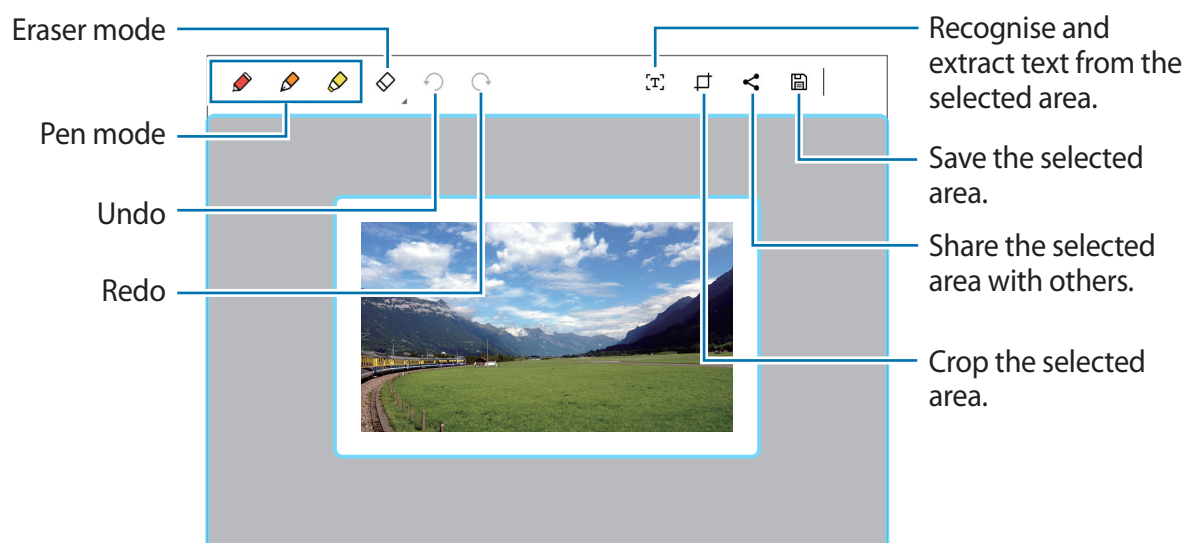
Smart select

Use the S Pen to select an area and perform actions, such as sharing or saving.

- 1 When there is content you want to capture, such as a part of an image, open the Air command panel and tap **Smart select**.
- 2 Select a desired shape icon on the toolbar and drag the S Pen across the content you want to select.



- 3 Edit the selected area using various editing options.



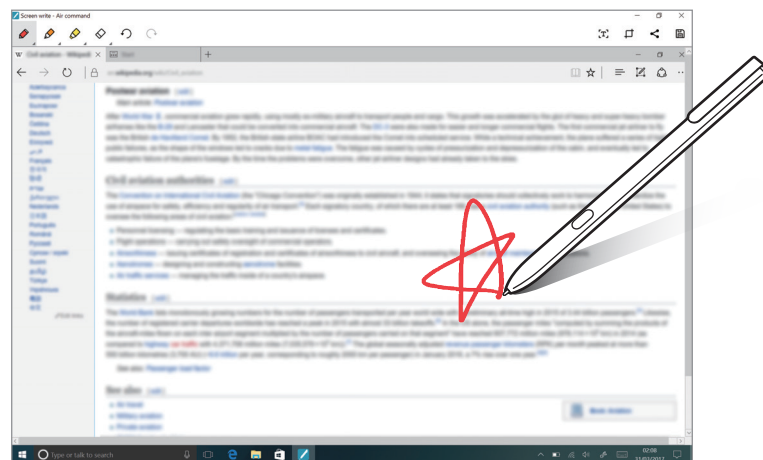
Screen write

Capture screenshots to write or draw on them.

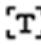



- 1 When there is content you want to capture, open the Air command panel and tap **Screen write**.

The current screen is automatically captured and the editing toolbar appears on the screen.

- 2 Write a memo on the screenshot.



- 3 Select an option to use with the screenshot.

- : Recognise and extract text from the screenshot.
- : Crop the screenshot.
- : Share the screenshot with others.
- : Save the screenshot.





It is not possible to capture a screenshot while using some apps.

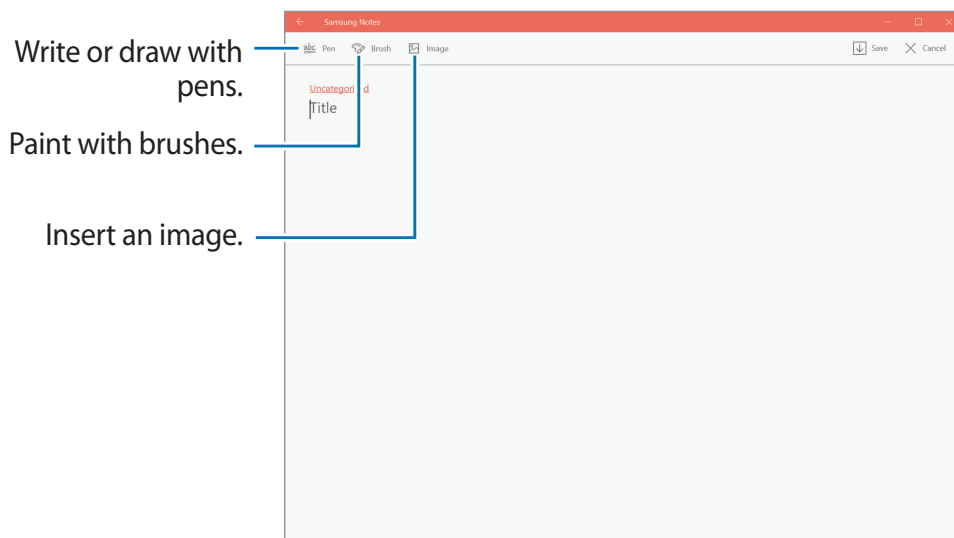
Samsung Notes

Introduction

Create notes by writing or drawing on the screen with the S Pen. You can also insert images into your notes.

Creating notes

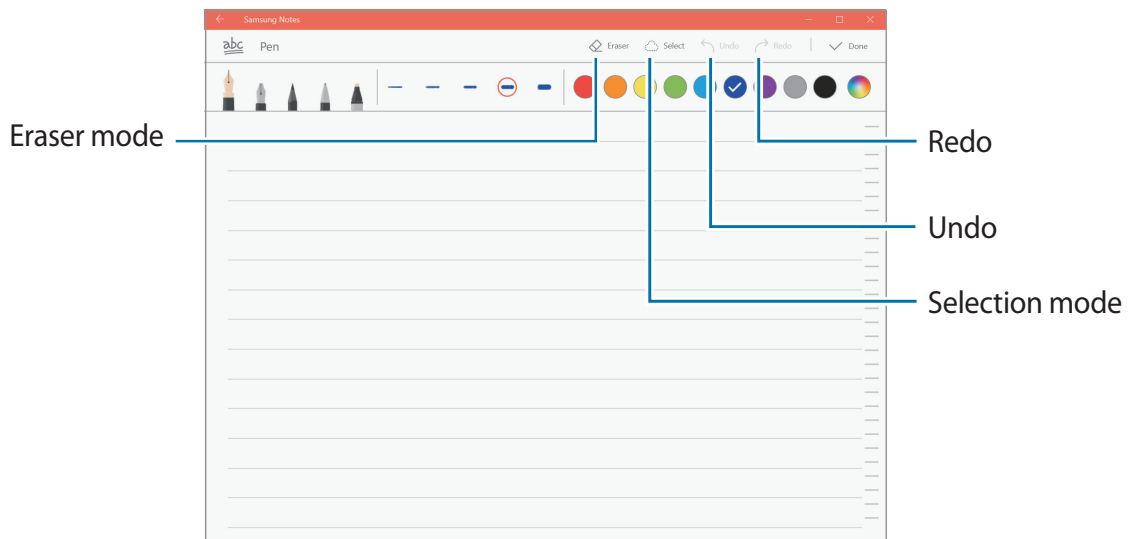
- 1 On the taskbar, tap  → **Samsung Notes** → **All notes** → .
You can also open the Air command panel and tap the **Create note** shortcut.
- 2 Select an input method from the toolbar at the top of the screen and compose a note.
Tap **Image** to insert an image by selecting from **File Explorer**.



- 3 When you are finished composing the note, tap **Save**.

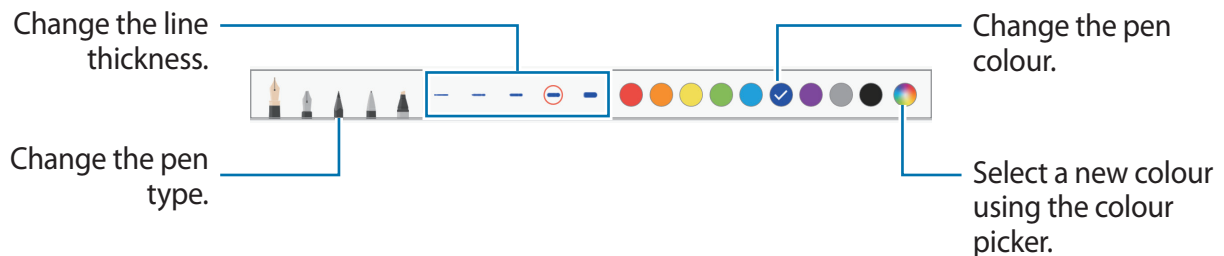
Composing notes in handwriting mode

On the note composer screen, tap **Pen** to write or draw with the S Pen.



Changing the pen settings

When writing or drawing on the screen, you can change the pen type, line thickness, or pen colour.



Using the line eraser

1 When you want to erase handwriting from a note, tap **Eraser**.

2 Tap an area to erase.

The whole line on the area will be erased. The line eraser can erase your note line by line.

- To only erase the area you touch with the S Pen, tap **Eraser** once more and tap **Erase touched area**. You can adjust the size of the eraser by dragging the size adjustment bar.
- To clear the note, tap **ERASE ALL**.



- You can also erase an area in pen mode by tapping it while pressing and holding the S Pen button.
- Even with a smaller eraser, you may still not be able to precisely erase the intended part.

Editing handwritten notes

Edit handwritten notes using various editing options, such as cutting, moving, or resizing.

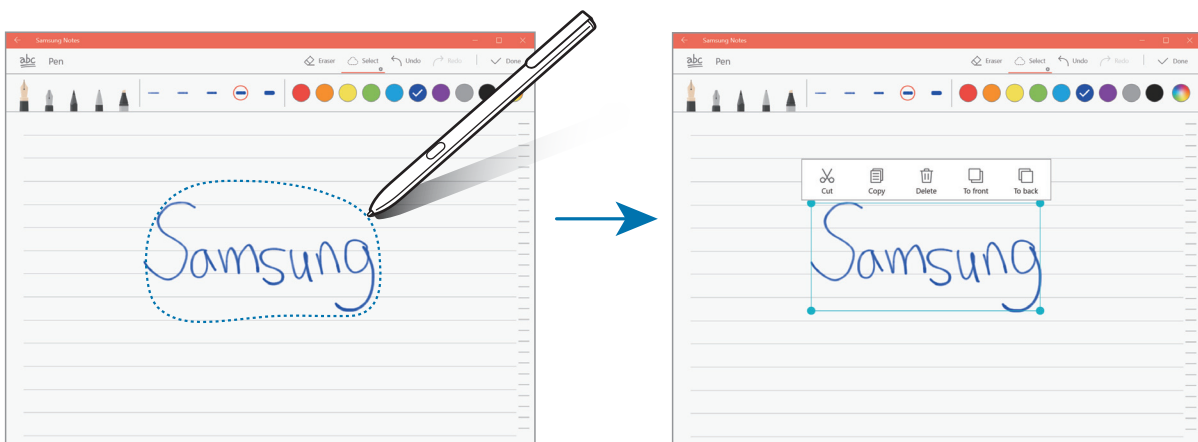
1 When there is handwriting on the note, tap **Select**.

To change the shape of the selection, tap **Select** once more.

2 Tap or draw a line around the input to select.

To move the input to another location, select the input, and then drag it to a new location.

To change the size of the selection, tap the input and drag a corner of the frame that appears.



3 Edit the input using the available options.

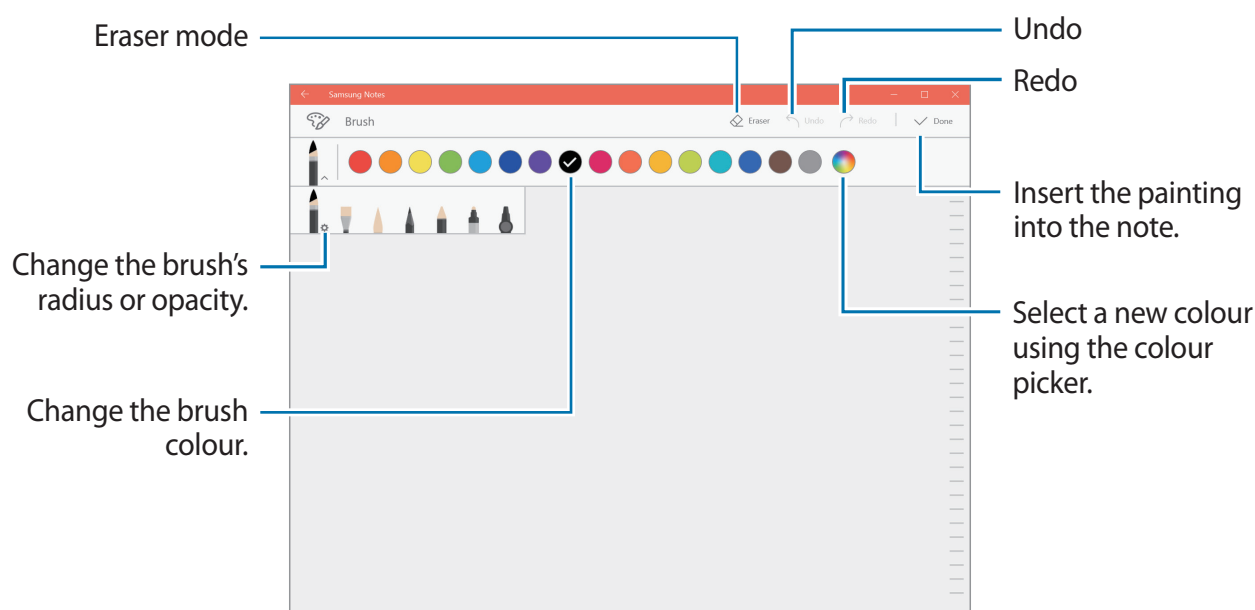
- **Cut:** Cut out the input. To paste it to another location, tap and hold the location, and then tap **Paste**.
- **Copy:** Copy the input. To paste it to another location, tap and hold the location, and then tap **Paste**.

- **Delete:** Delete the input.
- **To front:** Send the input to the front.
- **To back:** Send the input to the back.

Painting with brushes

On the note composer screen, tap **Brush** to paint with various brushes.


When you are finished, tap **Done** to insert your painting into the note.



Inserting images into a note

On the note composer screen, tap **Image** to select an image. The image will be inserted into your note.

Deleting notes

- 1 On the taskbar, tap  → **Samsung Notes** → **All notes**.
- 2 Tap **Select** and tick a note to delete.
To delete multiple notes, tick more notes to delete.
- 3 Tap **Delete**.

Samsung Flow

Introduction


Samsung Flow allows you to easily connect your tablet to your smartphone and use them conveniently, such as unlocking your tablet screen or sharing contents.

Samsung Flow must be installed on your tablet and smartphone that you want to connect. If Samsung Flow is not installed, download it from app stores.



- This feature is only available on some Samsung Android smartphones.
- To use this feature, you must register your fingerprint, and activate NFC and Bluetooth feature on your smartphone.

Connecting your tablet and smartphone

- 1 On your smartphone, launch **Samsung Flow**, and then tap the switch to activate it.
If you have not registered your fingerprint, follow the on-screen instructions to register your fingerprint.
- 2 On the taskbar of your tablet, tap  → **Samsung Flow**, and then tap **PAIR**.
The detected devices are listed.
- 3 Select your smartphone from the detected devices list, and then tap **PAIR** → **Yes**.
- 4 Accept the connection request on both devices.
- 5 On your tablet, tap **Register device**.
If you have not registered a PIN, tap **Register PIN**, and then follow the on-screen instructions to register the PIN.
- 6 On your tablet, enter the PIN, and then follow the on-screen instructions to add the registered fingerprint on your smartphone.
Both devices will connect via Samsung Flow.

Unlocking your tablet screen with fingerprint

You can unlock your tablet screen with registered fingerprint on your smartphone.

- 1 On the locked screen of your tablet, touch the NFC antenna area on the back of your smartphone to the nfc tag of your keyboard cover.
Samsung Flow will launch automatically on your smartphone.
- 2 When a fingerprint lock pop-up window appears, on your smartphone, scan your registered fingerprint. You can unlock your tablet screen.

Sharing mobile data connection

Share your smartphone's mobile data connection with your tablet using a mobile hotspot when the Internet connection is not available on your tablet.

- 1 On your smartphone, activate the mobile hotspot feature.
- 2 On the locked screen of your tablet, unlock your tablet screen with fingerprint. Refer to [Unlocking your tablet screen with fingerprint](#) for more information.
- 3 When the mobile hotspot window appears on your tablet, follow the on-screen instructions to complete the connection.

You can access the Internet on your tablet using your smartphone's mobile data connection.



You may incur additional charges on your smartphone when using this feature.

Checking notifications on your tablet

When you receive new notifications on your smartphone, check notifications from the virtual screen or in pop-up window on your tablet.

Sharing contents

You can share your smartphone's contents with your tablet.

Show Window


Show Window allows you to select an area on the screen and show it in full screen mode on an external display. You can draw on the screen using tools.

Showing a selected area on an external display

- 1 Connect the device to an external display.



You can connect an external display using a cable or wirelessly. Refer to [Connecting to an external display](#) for more information.

- 2 On the taskbar, tap  → **Samsung** → **Show Window**.

- 3 Press and hold the **Fn** key and press the **F4** key simultaneously, and then press the **F4** key again to select **Extend**.

- 4 Tap **Start**.

A white frame for selecting an area will appear.



Start is activated only when the display mode is set to **Extend**.

- 5 Drag ● to select an area to show in full screen mode on the external display, and then tap **Done**.

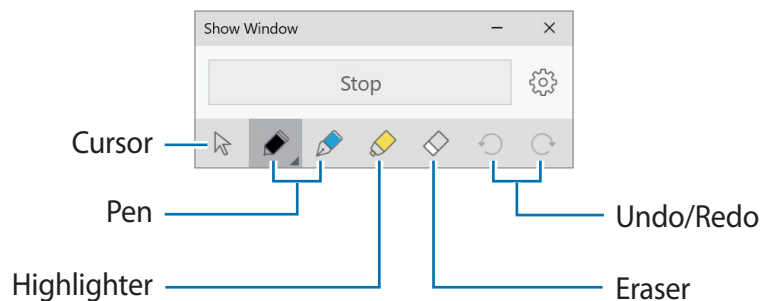
The selected area will be shown on the external display.

To fix the ratio of the selected area to the ratio of the external screen, tap ⚙️ and tap the **Fixed ratio** switch to activate it.

To stop displaying the screen, tap **Stop**.

Using tools

While showing the screen on the connected display, you can use the following tools.



While using the pen or highlighter, tap the desired icon again to change the colour or line thickness.

Setting the connection notification

You can set the device to display a notification which prompts you to use **Show Window** when an external device is connected. Tap ⚙️ and tap the **Auto launch** switch to activate it.

Camera

Take photos and record videos using various modes and settings.

On the taskbar, tap  → **Camera**.



When you launch **Camera**, the LED indicator turns on. The LED indicator will be automatically turned off after the camera is turned off.

Taking photos or recording videos



1


Tap the image on the preview screen where the camera should focus.



This feature is only available when using the rear camera.

2


Tap  to take a photo or tap  to record a video.

- Spread two fingers apart on the screen to zoom in, and pinch to zoom out.
- To switch between the front and rear cameras, tap .



Book Settings

Samsung-integrated settings app offers various settings functions.

- 1 On the taskbar, tap  → **Book Settings**.
- 2 Select an option to configure the corresponding function.
 - **Pen:** Select an app to launch when you press the S Pen button while hovering the S Pen over the screen.
 - **Battery Life Extender:** Set the maximum battery charge level to 85% to prolong the battery lifetime.
 - **AMOLED:** Change the screen mode and the screen brightness timer.
 - **Pattern Log-in:** Set a pattern to use it as your screen lock method.
 - **APN (mobile network-enabled models):** Set up access point names (APNs).
 - **Legal information:** View the Samsung legal information, the open source licence announcement, and the safety information.
 - **User manual:** View help information to learn how to use the device and apps or configure important settings.
 - **About device:** Access device information.

Samsung Recovery

Introduction


Back up your data and settings, and restore your device to a previously backed up point or to the factory default.

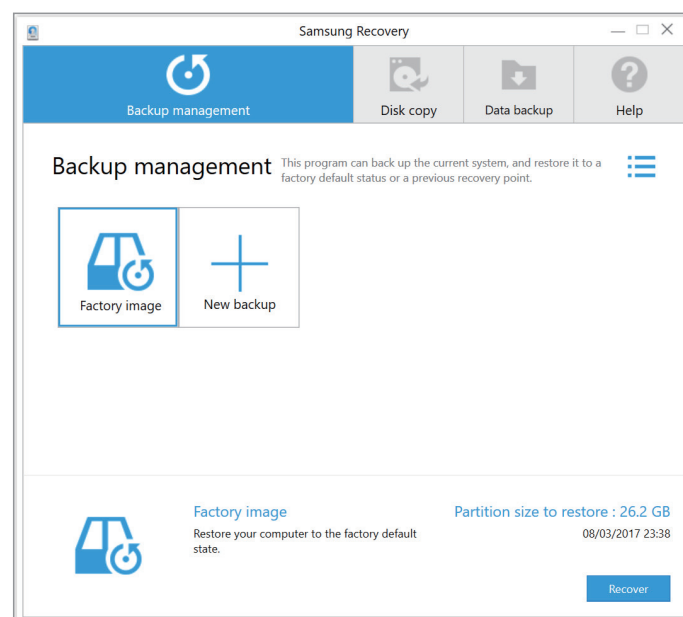


- To use this app, you must sign in to the device with an administrator account, or enter the administrator's password.
- When you restore your device, it will erase the data or apps saved after the selected backup point. Ensure you back up important data regularly. If necessary, back up important data to an external storage device before restoring the system.
- When you launch the application for the first time, read and accept the Terms and Conditions when they display on the screen.

Restoring to factory default

Restore the device to its factory default settings. Before performing a factory data reset, ensure you back up all important data stored on the device. Refer to [Backing up the current system](#) for more information.


- 1 On the taskbar, tap  → **Samsung** → **Samsung Recovery**.
If Windows does not start, turn on your device and press the **F4** key several times immediately before the Samsung logo appears, to launch **Samsung Recovery**.
- 2 Tap **Backup management** → **Factory image** → **Recover** → **Recover** → **OK**.

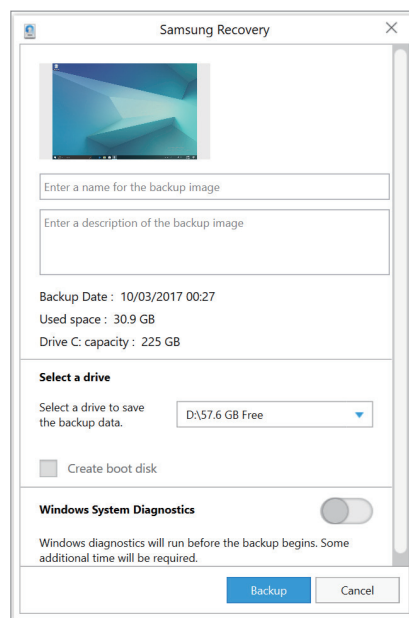


- 3 Follow the on-screen instructions to complete the recovery.

Backing up the current system

Back up important data to an external storage device regularly to prevent data loss.


- 1 Connect an external storage device.
- 2 On the taskbar, tap  → **Samsung** → **Samsung Recovery**.
- 3 Tap **Backup management** → **New backup**.
- 4 Enter backup information and select the external storage device.
- 5 Tap **Backup**.

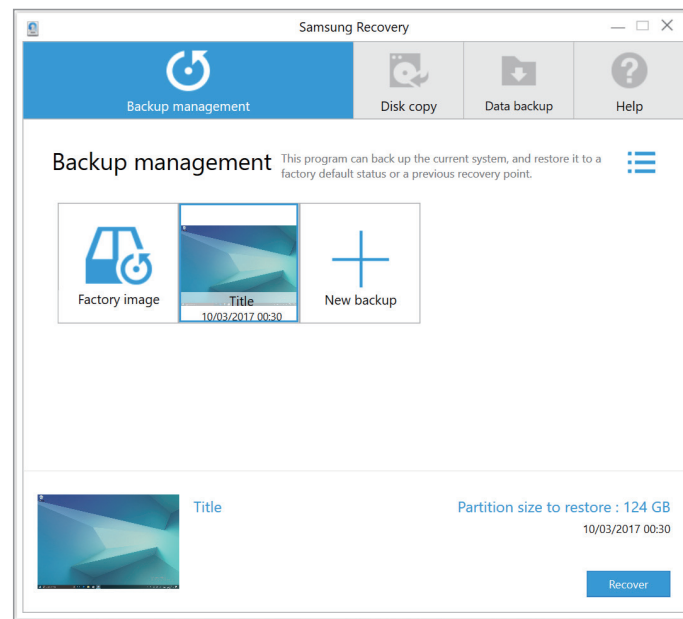


- 6 When the backup start window appears, tap **Yes**.
 - 7 When the backup complete window appears, tap **OK**.
- When the backup is finished, the backup image will appear on the backup management screen.

Restoring the system

Select a backup point saved on an external storage device to restore the device to that point.

- 1 Connect the external storage device to your device.
- 2 On the taskbar, tap  → **Samsung** → **Samsung Recovery**.
- 3 Tap **Backup management**, select a backup image, and then tap **Recover**.



- 4 Tap **Recover**.

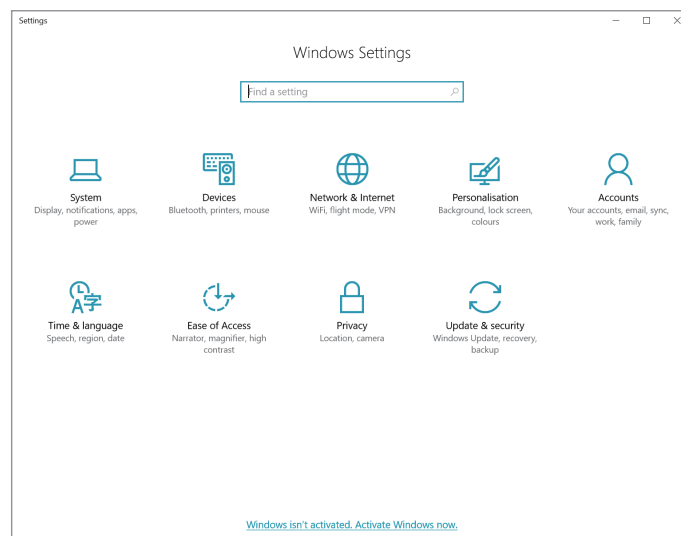
Settings

Windows Settings

Customise settings for functions and apps. You can make your device more personalised by configuring various setting options.

On the taskbar, tap  → .

To search for settings by entering keywords, tap the search field at the top of the screen.



The available options may vary depending on the region or service provider.

System

Change the system settings.



The actual available capacity of the internal memory is less than the specified capacity because the operating system and default apps occupy part of the memory. The available capacity may change when you update the device.

Devices

Change settings related to your connected devices.

Network & Internet

Change the network and Internet settings.



- Your device uses a non-harmonised frequency and is intended for use in all European countries. The WLAN can be operated in the EU without restriction indoors, but cannot be operated outdoors.
- Turn off Wi-Fi to save the battery when not in use.

Personalisation

Change the display settings, such as a wallpaper, colour, and theme.

Accounts

Change the account settings.

Time & language

Change settings to control how the device displays the time and date, and select your country or region. You can also select device languages and change settings, such as keyboards and voice input types.



If the battery remains fully discharged or removed from the device, the time and date is reset.

Ease of Access

Change settings to improve the device's accessibility.

Privacy

Change the privacy settings.

Update & security

Change the Windows update, data backup, and device security settings.

BIOS (Setup utility)

Introduction

BIOS is the program that starts the operating system when you turn on your device. Access the BIOS setup screen to set a boot password, perform battery calibration, and more.



Be careful when changing BIOS settings. Incorrect changes may cause the system to malfunction or crash.



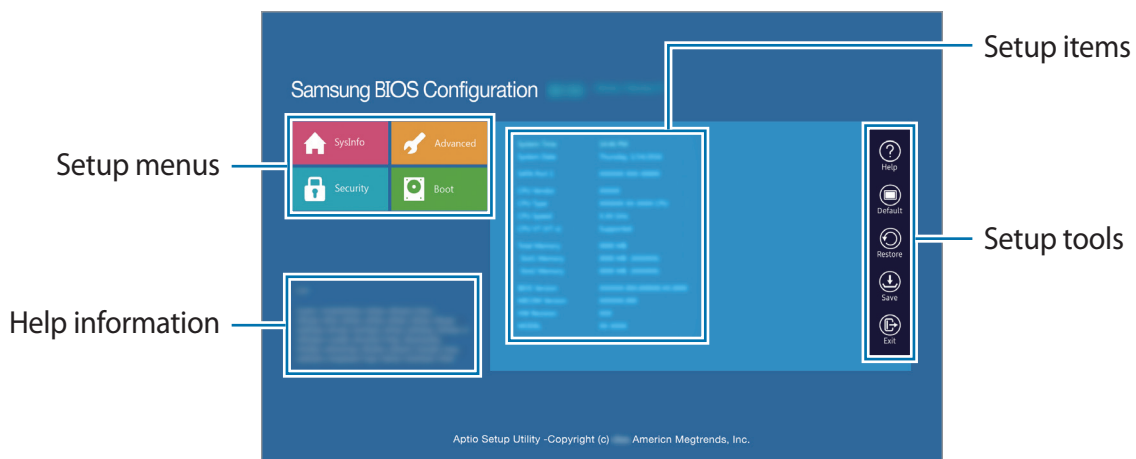
The BIOS setup screens, menus, and items may appear differently depending on the model and BIOS version.

Entering the BIOS screen

When your device is connected to the Keyboard Cover, press the **F2** key several times immediately after you turn on your device, before the Samsung logo appears.

Alternatively, press the Volume Up key several times when your device is not connected to the Keyboard Cover.

If the locked screen or the Start screen appears, restart the device and try again.



Setup tools

- **Help:** View the help information for the BIOS setup.
- **Default:** Restore the device to the default settings.
- **Restore:** Undo changes.

- **Save:** Save the changes and restart the device.
- **Exit:** Restart the device without saving the changes.

Setup menus

- **SysInfo:** View the basic specifications of the device.
- **Advanced:** Configure the advanced settings and perform the battery calibration.
- **Security:** Configure security functions.
- **Boot:** Configure boot-related settings.

Setting the boot password

Setting a password with the BIOS enhances protection against viruses and hacking attacks.

On the BIOS screen, tap **Security**.

The following password settings are available:

- **Supervisor Password:** This password is required when turning on the device or entering the BIOS screen. This password allows you to enter the BIOS screen as an administrator. You can change the BIOS settings.
- **User Password:** This password is required when turning on the device or entering the BIOS screen. This password allows you to enter the BIOS screen as a user. You cannot change the BIOS settings. The password will be deactivated automatically if the supervisor password is removed.
- **HDD Password:** This password is required to access the hard disk drive (HDD) from the device. This password may not be supported depending on the model.



Do not forget your password or expose it to others.



- If you forget your supervisor password or HDD password, contact a Samsung Service Centre.
- If you forget your user password, you can remove it by removing the supervisor password.

Setting a boot password

To set a user password or HDD password, you must set the supervisor password first.

- 1 Tap **Set Supervisor Password**, **Set User Password**, or **Set HDD Password**.
- 2 Enter a password and tap **Ok**.
The password can be up to 20 characters long.
- 3 Enter the password again and tap **Ok**.
- 4 Tap **Save** to save the password and restart the device.

Removing a password

- 1 Tap **Set Supervisor Password**, **Set User Password**, or **Set HDD Password**.
- 2 Enter the password and tap **Ok**.
- 3 Without entering any characters, tap **Ok** → **Ok**.
The password will be removed.

Boot priority

Change the boot priority from the BIOS setup.

- 1 On the BIOS screen, tap **Boot**.
- 2 Tap **Boot Device Priority**.
- 3 Tap the drop-down menu and select an option.
- 4 Tap **Save** to save the setting and restart the device.

Smart Battery Calibration

If the battery is charged or discharged repeatedly over a short period, the actual battery power and the detected remaining battery power may be different. Performing a battery calibration will discharge the battery completely to ensure more accurate battery level detection.



The battery calibration will take three to five hours. The time may differ depending on the remaining battery level.

- 1 Fully charge the battery.
- 2 Disconnect the charger from the device.
- 3 On the BIOS screen, tap **Advanced**.
- 4 Tap **Smart Battery Calibration**.
The battery calibration will start and the battery will be discharged.
To stop the calibration, press the **Esc** key.

Appendix

Troubleshooting

Before contacting a Samsung Service Centre, please attempt the following solutions. Some situations may not apply to your device.

When you turn on your device or while you are using the device, it prompts you to enter one of the following codes:

- **Password:** When the device lock feature is enabled, you must enter the password you set for the device.
- **PIN:** When using the device for the first time or when the PIN requirement is enabled, you must enter the PIN supplied with the SIM or USIM card. You can disable this feature by using the Lock SIM card menu.
- **PUK:** Your SIM or USIM card is blocked, usually as a result of entering your PIN incorrectly several times. You must enter the PUK supplied by your service provider.
- **PIN2:** When you access a menu requiring the PIN2, you must enter the PIN2 supplied with the SIM or USIM card. For more information, contact your service provider.

Your device displays network or service error messages

- When you are in areas with weak signals or poor reception, you may lose reception. Move to another area and try again. While moving, error messages may appear repeatedly.
- You cannot access some options without a subscription. For more information, contact your service provider.

Your device does not turn on

When the battery is completely discharged, your device will not turn on. Fully charge the battery before turning on the device.

The touchscreen responds slowly or improperly

- If you attach a screen protector or optional accessories to the touchscreen, the touchscreen may not function properly.
- If you are wearing gloves, if your hands are not clean while touching the touchscreen, or if you tap the screen with sharp objects or your fingertips, the touchscreen may malfunction.
- The touchscreen may malfunction in humid conditions or when exposed to water.
- Restart your device to clear any temporary software bugs.
- Ensure that your device software is updated to the latest version.
- If the touchscreen is scratched or damaged, visit a Samsung Service Centre.

The device responds slowly

If you use the device without connecting the Keyboard Cover, the device's speed and performance may be affected. Use the device with the Keyboard Cover connected.

Your device freezes or has fatal errors

Try the following solutions. If the problem is still not resolved, contact a Samsung Service Centre.

Restarting the device


If your device freezes or hangs, you may need to close apps or turn off the device and turn it on again.

Forcing restart

If your device is frozen and unresponsive, press and hold the Power key for more than 10 seconds until the device turns off. Then, press and hold the Power key for a few seconds to restart it.

Resetting the device

If the methods above do not solve your problem, perform a factory data reset.

On the taskbar, tap  → **Samsung** → **Samsung Recovery** → **Factory image** → **Recover** → **Recover** → **OK**. Before performing the factory data reset, remember to make backup copies of all important data stored in the device.

If Windows does not start, turn on your device and press the **F4** key several times immediately before the Samsung logo appears, to launch **Samsung Recovery**.

The Internet is often disconnected

- Ensure that you are not blocking the device's internal antenna.
- When you are in areas with weak signals or poor reception, you may lose reception. You may have connectivity problems due to issues with the service provider's base station. Move to another area and try again.
- When using the device while moving, wireless network services may be disabled due to issues with the service provider's network.

The battery icon is empty

Your battery is low. Charge the battery.

The battery does not charge properly (For Samsung-approved chargers)

- Ensure that the charger is connected properly.
- Visit a Samsung Service Centre and have the battery replaced.

The battery depletes faster than when first purchased

- When you expose the device or the battery to very cold or very hot temperatures, the useful charge may be reduced.
- Battery consumption increases when you use some apps, such as games or the Internet.
- The battery is consumable and the useful charge will get shorter over time.

Your device is hot to the touch

When you use apps that require more power or use apps on your device for an extended period of time, your device may feel hot to the touch. This is normal and should not affect your device's lifespan or performance.

If the device overheats or feels hot for a prolonged period, do not use it for a while. If the device continues to overheat, contact a Samsung Service Centre.

Error messages appear when launching the camera

Your device must have sufficient available memory and battery power to operate the camera app. If you receive error messages when launching the camera, try the following:

- Charge the battery.
- Free some memory by transferring files to an external storage device or deleting files from your device.
- Restart the device. If you are still having trouble with the camera app after trying these tips, contact a Samsung Service Centre.

Photo quality is poorer than the preview

- The quality of your photos may vary, depending on the surroundings and the photography techniques you use.
- If you take photos in dark areas, at night, or indoors, image noise may occur or images may be out of focus.

Error messages appear when opening multimedia files

If you receive error messages or multimedia files do not play when you open them on your device, try the following:

- Free some memory by transferring files to an external storage device or deleting files from your device.
- Ensure that the music file is not Digital Rights Management (DRM)-protected. If the file is DRM-protected, ensure that you have the appropriate licence or key to play the file.
- Ensure that the file formats are supported by the device. If a file format is not supported, such as DivX or AC3, install an app that supports it. To confirm the file formats that your device supports, visit www.samsung.com.

- Your device supports photos and videos captured with the device. Photos and videos captured by other devices may not work properly.
- Your device supports multimedia files that are authorised by your network service provider or providers of additional services. Some content circulated on the Internet, such as ringtones, videos, or wallpapers, may not work properly.

Another Bluetooth device is not located

- Ensure that the Bluetooth wireless feature is activated on your device.
- Ensure that the Bluetooth wireless feature is activated on the device you wish to connect to.
- Ensure that your device and the other Bluetooth device are within the maximum Bluetooth range (10 m).

If the tips above do not solve the problem, contact a Samsung Service Centre.

Your device cannot find your current location

GPS signals may be obstructed in some locations, such as indoors. Set the device to use Wi-Fi to find your current location in these situations.

Data stored in the device has been lost

Always make backup copies of all important data stored in the device. Otherwise, you cannot restore data if it is corrupted or lost. Samsung is not responsible for the loss of data stored in the device.

The touchscreen does not turn on when you open the Keyboard Cover

Ensure that your device connects to the Keyboard Cover, and the device is in correct position using the stand of the Keyboard Cover. Refer to [Keyboard Cover](#) for more information.

A small gap appears around the outside of the device case

- This gap is a necessary manufacturing feature and some minor rocking or vibration of parts may occur.
- Over time, friction between parts may cause this gap to expand slightly.

Windows recovery function

If the **Samsung Recovery** app is not supported, reinstall Windows using the Windows recovery function.



Reinstalling Windows will erase all apps and data on the device. Back up important apps and data to an external storage device before reinstalling Windows.



After Windows is reinstalled, you can install the required Samsung apps.

- 1 On the taskbar, tap  →  → **Update & security** → **Recovery**.
- 2 Tap **Get started**.
- 3 Tap **Keep my files** or **Remove everything**.

Removing the battery

- **To remove the battery, contact an authorised service centre. To obtain battery removal instructions, please visit www.samsung.com/global/ecodesign_energy.**
- For your safety, you **must not attempt to remove** the battery. If the battery is not properly removed, it may lead to damage to the battery and device, cause personal injury, and/or result in the device being unsafe.
- Samsung does not accept liability for any damage or loss (whether in contract or tort, including negligence) which may arise from failure to precisely follow these warnings and instructions, other than death or personal injury caused by Samsung's negligence.

Copyright

Copyright © 2017 Samsung Electronics

This manual is protected under international copyright laws.

No part of this manual may be reproduced, distributed, translated, or transmitted in any form or by any means, electronic or mechanical, including photocopying, recording, or storing in any information storage and retrieval system, without the prior written permission of Samsung Electronics.

Trademarks

- SAMSUNG and the SAMSUNG logo are registered trademarks of Samsung Electronics.
- Microsoft, MS-DOS, and Windows are trademarks or registered trademarks of the Microsoft Corporation.
- Bluetooth® is a registered trademark of Bluetooth SIG, Inc. worldwide.
- Wi-Fi®, Wi-Fi Protected Setup™, Wi-Fi CERTIFIED™, and the Wi-Fi logo are registered trademarks of the Wi-Fi Alliance.
- All other trademarks and copyrights are the property of their respective owners.